

**Diversity in Stainless Steel.**

**Main catalogue**

**Equipment and appliances for industry and trade**

## A Industrial equipment and furniture

Stainless steel tables	A1 - A4
Cupboards / Storage	A5 - A17
Working tables / Meat processing	A18 - A27

## B Shelf units / Shelving systems

Aluminium shelf units	B1
Stainless steel shelf units	B2 - B7
Shelving system A59	B8
Shelving system B59	B9 - B10

## C Hygiene

Commercial sinks and sink cupboards	C1 - C2
Utility sink	C2 - C4
Hand-washing basins / sluices	C5 - C7
Staff hygiene	C8 - C11
Waste containers	C12 - C13
Cleaning and disinfection	C14 - C34

## D Trolleys and containers

Smoking trolleys and accessories	D1 - D9
Lifting and loading trolleys and accessories	D10 - D11
Mixing troughs	D12 - D13
Transport trolleys and containers	D14 - D23
Euro standard transport trolleys	D24 - D25
Clearing trolleys	D26

## E Cooking kettles and additional cooking kettles

Model overview and technical data	E2
Cooking kettle, 300 - 400 l, directly heated	E3
Cooking kettle, 300 l, indirectly heated (glycerin)	E4
Additional cooking kettle, 120 - 150 l, angular, indirectly heated (glycerin)	E5
Additional cooking kettle, 150 - 200 l, angular, indirectly heated (digital controls)	E6
Additional cooking kettle, 90 - 150 l, round, indirectly heated (glycerin)	E7
Mini cooker	E8
Accessories	E9 - E10

<b>F</b>	<b>Ham presses / Cooking moulds</b>	
	Manual ham press	F1
	Pneumatic ham press	F2
	Ham cooking moulds	F3
	Custom-made models	F4
<b>G</b>	<b>Small appliances</b>	
	Accessories for catering / fast food outlets / butchers	G1 - G4
<b>H</b>	<b>Transport and logistics</b>	
	Aluminium flat pallets	H1 - H2
	Aluminium stacking frames	H3
	Aluminium box pallets	H4 - H6
	Stainless steel flat pallets	H7
	Stainless steel box pallets	H8 - H10
	Transport and storage containers - custom-made designs	H11 - H14
<b>I</b>	<b>Specialist catalogues</b>	
<b>J</b>	<b>Replacement parts</b>	
<b>K</b>	<b>Price lists and request forms</b>	
<b>L</b>	<b>General</b>	
	General terms and conditions of business	

## Brökelmann

Brökelmann Geräte- und Anlagenbau GmbH & Co.

Hauptstraße 21

59755 Arnsberg

Germany

Telefon: +49 (0) 2932 94190-0

Fax: +49 (0) 2932 94190-70

E-Mail: [info@broekelmann.eu](mailto:info@broekelmann.eu)

[www.broekelmann.eu](http://www.broekelmann.eu)



## Tables

- » manufactured from stainless steel material no. 1.4301
- » matt ground finish, grain 240
- » sound dampening upper board underlaid with Terodem
- » with optional 50 mm upstand at back
- » see the table for other design options for the basic frame
- » completely welded design
- » ground clearance 200 mm
- » with adjustable plastic gliders for balancing out ground unevenness



1



2

Fig.	Item no. with upstand	Item no. without upstand	Dimensions in mm WxDxH	Basic frame
	H574066AV00	<b>1</b> H574066PV00	600x600x900	Bracing on three sides
	H574086AV00	H574086PV00	800x600x900	Bracing on three sides
	H574106AV00	H574106PV00	1000x600x900	Bracing on three sides
	H574126AV00	H574126PV00	1200x600x900	Bracing on three sides
	H574146AV00	H574146PV00	1400x600x900	Bracing on three sides
	H574166AV00	H574166PV00	1600x600x900	Bracing on three sides
	H574186AV00	H574186PV00	1800x600x900	Bracing on three sides
	H574206AV00	H574206PV00	2000x600x900	Bracing on three sides
	H574067AV00	H574067PV00	600x700x900	Bracing on three sides
	H574087AV00	H574087PV00	800x700x900	Bracing on three sides
	H574107AV00	H574107PV00	1000x700x900	Bracing on three sides
	H574127AV00	H574127PV00	1200x700x900	Bracing on three sides
	H574147AV00	H574147PV00	1400x700x900	Bracing on three sides
	H574167AV00	H574167PV00	1600x700x900	Bracing on three sides
	H574187AV00	H574187PV00	1800x700x900	Bracing on three sides
	H574207AV00	H574207PV00	2000x700x900	Bracing on three sides

Fig.	Item no. with upstand	Item no. without upstand	Dimensions in mm WxDxH	Basic frame
	H574066AB00	<sup>2</sup> H574066PB00	600x600x900	storage shelf
	H574086AB00	H574086PB00	800x600x900	storage shelf
	H574106AB00	H574106PB00	1000x600x900	storage shelf
	H574126AB00	H574126PB00	1200x600x900	storage shelf
	H574146AB00	H574146PB00	1400x600x900	storage shelf
	H574166AB00	H574166PB00	1600x600x900	storage shelf
	H574186AB00	H574186PB00	1800x600x900	storage shelf
	H574206AB00	H574206PB00	2000x600x900	storage shelf
	H574067AB00	H574067PB00	600x700x900	storage shelf
	H574087AB00	H574087PB00	800x700x900	storage shelf
	H574107AB00	H574107PB00	1000x700x900	storage shelf
	H574127AB00	H574127PB00	1200x700x900	storage shelf
	H574147AB00	H574147PB00	1400x700x900	storage shelf
	H574167AB00	H574167PB00	1600x700x900	storage shelf
	H574187AB00	H574187PB00	1800x700x900	storage shelf
	H574207AB00	H574207PB00	2000x700x900	storage shelf

**Tables with drawer unit**

- » manufactured from stainless steel material no. 1.4301
- » matt ground finish, grain 240
- » sound dampening upper board underlaid with Terodem
- » with intermediate shelf and drawer unit left or right
- » 3 drawers with  $\frac{3}{4}$  pullout
- » completely welded design
- » ground clearance 200 mm
- » with adjustable plastic gliders for balancing out ground unevenness
- » with standard 50 mm upstand at back
- » also available without upstand. To do this order the relevant item number with the additional code "KA" (example: H51901-LOKA)



**1**

Item no.	Item no.	Dimensions in mm	
<b>1</b> Drawer unit left	Drawer unit right	WxDxH	
H51901-L0	H51901-R0	1200x600x900	
H51902-L0	H51902-R0	1400x600x900	
H51903-L0	H51903-R0	1600x600x900	
H51904-L0	H51904-R0	1800x600x900	
H51905-L0	H51905-R0	2000x600x900	
H51911-L0	H51911-R0	1200x700x900	
H51912-L0	H51912-R0	1400x700x900	
H51913-L0	H51913-R0	1600x700x900	
H51914-L0	H51914-R0	1800x700x900	
H51915-L0	H51915-R0	2000x700x900	

### Side tables

- » manufactured from stainless steel material no. 1.4301
- » matt ground finish, grain 240
- » flat upper board, 50 mm bevel
- » see the table for basic frame design
- » optionally in welded model or in pieces for self-assembly
- » ground clearance 300 mm
- » with adjustable plastic gliders for balancing out ground unevenness



1

Fig.	Item no. in pieces	Item no. welded	Dimensions in mm WxDxH	basic frame
1	H57605B5	H57605B0	630x500x900	storage shelf
	H57606B5	H57606B0	850x500x900	storage shelf
	H57607B5	H57607B0	1100x500x900	storage shelf
	H57608B5	H57608B0	1130x500x900	storage shelf
	H57609B5	H57609B0	650x650x900	storage shelf



### Table cabinets

- » manufactured from stainless steel material no. 1.4301
- » matt ground finish, grain 240
- » with one intermediate shelf of adjustable height
- » See the table for cabinet design
- » completely welded design
- » sound dampening upper board underlaid with Terodem
- » ground clearance 200 mm
- » with adjustable plastic gliders for balancing out ground unevenness
- » with standard 50 mm upstand at back
- » also available without upstand. To do this order the relevant item number with the additional code "KA" (example: H5450001-KA)



1



2



3

Item no. 1 open at front	Item no. 2 folding doors	Item no. 3 sliding doors	Dimensions in mm WxDxH
H5450001	H5450003	H5450000	1000x600x900
H5450101	H5450103	H5450100	1200x600x900
H5450201	H5450203	H5450200	1400x600x900
H5450301	H5450303	H5450300	1600x600x900
H5450401	H5450403	H5450400	1800x600x900
H5450501	H5450503	H5450500	2000x600x900
H5460001	H5460003	H5460000	1000x700x900
H5460101	H5460103	H5460100	1200x700x900
H5460201	H5460203	H5460200	1400x700x900
H5460301	H5460303	H5460300	1600x700x900
H5460401	H5460403	H5460400	1800x700x900
H5460501	H5460503	H5460500	2000x700x900

## Table cabinets with drawer unit

- » manufactured from stainless steel material no. 1.4301
- » matt ground finish, grain 240
- » with one intermediate shelf of adjustable height
- » with drawer unit left or right
- » 3 drawers with  $\frac{3}{4}$  pullout
- » see the table for cabinet design
- » completely welded design
- » sound dampening upper board underlaid with Terodem
- » ground clearance 200 mm
- » with adjustable plastic gliders for balancing out ground unevenness
- » with standard 50 mm upstand at back
- » also available without upstand. To do this order the relevant item number with the additional code "KA" (example: H54401-SLKA)



1

Fig.	Item no.	Dimensions in mm WxDxH	Basic frame
	H54401-SL	1600x600x900	sliding doors and drawer unit left
	H54402-SL	1800x600x900	sliding doors and drawer unit left
	H54403-SL	2000x600x900	sliding doors and drawer unit left
	H54404-SL	1600x700x900	sliding doors and drawer unit left
	H54405-SL	1800x700x900	sliding doors and drawer unit left
	H54406-SL	2000x700x900	sliding doors and drawer unit left
<b>1</b>	H54401-SR	1600x600x900	sliding doors and drawer unit right
	H54402-SR	1800x600x900	sliding doors and drawer unit right
	H54403-SR	2000x600x900	sliding doors and drawer unit right
	H54404-SR	1600x700x900	sliding doors and drawer unit right
	H54405-SR	1800x700x900	sliding doors and drawer unit right
	H54406-SR	2000x700x900	sliding doors and drawer unit right

### Drawer units

- » manufactured from stainless steel material no. 1.4301
- » matt ground finish, grain 240
- » see the table for design
- » drawers with  $\frac{3}{4}$  pullout
- » completely welded design
- » ground clearance stationary model 200 mm, mobile model 75 mm
- » stationary model has adjustable plastic gliders for balancing out ground unevenness
- » mobile model has 4 swivel castors D=50 mm, 2x with stop, galvanised castor housing



1



2



3

Fig.	Item no.	Dimensions in mm WxDxH	Basic frame	Model
	H5441100	425x600x900	3 drawers, with upstand	stationary
	H5441200	425x700x900	3 drawers, with upstand	stationary
1	H54411KA	425x600x900	3 drawers, without upstand	stationary
	H54412KA	425x700x900	3 drawers, without upstand	stationary
2	H54411FB	425x600x775	3 drawers, without upstand	mobile
	H54412FB	425x700x775	3 drawers, without upstand	mobile
3	H5441600	810x600x900	6 drawers, with upstand	stationary
	H5441700	810x700x900	6 drawers, with upstand	stationary
	H54416KA	810x600x900	6 drawers, without upstand	stationary
	H54417KA	810x700x900	6 drawers, without upstand	stationary
	H54416FB	810x600x775	6 drawers, without upstand	mobile
	H54417FB	810x700x775	6 drawers, without upstand	mobile

### Wall cabinets

- » manufactured from stainless steel material no. 1.4301
- » matt ground finish, grain 240
- » intermediate shelf of adjustable height
- » see the table for cabinet design
- » completely welded design
- » with continuous wall mounting rail
- » mounting equipment is not included in delivery



1



2



3

Item no.	Item no.	Item no.	Dimensions in mm	
1 open at front	2 folding doors	3 sliding doors	WxDxH	
7120001	7120002	7120003	1000x400x600	
7120101	7120102	7120103	1200x400x600	
7120201	7120202	7120203	1400x400x600	
7120301	7120302	7120303	1600x400x600	
7120401	7120402	7120403	1800x400x600	
7120501	7120502	7120503	2000x400x600	

### Cleaning products and equipment cupboards

- » manufactured from stainless steel material no. 1.4301
- » matt ground finish, grain 240
- » with angled roof
- » ground clearance 150 mm
- » continuous solid welded storage shelf on top
- » see the table for other cabinet design options
- » lockable with twist lock
- » 1 key included in delivery
- » with adjustable plastic gliders for balancing out ground unevenness



Fig.	Item no.	Dimensions in mm WxDxH	Basic frame
1	54836DL	500x500x2100	cabinet divided vertically, left side open cabinet with 3 slidable hooks, right side with 3 storage shelves of adjustable height and 1 folding door
2	54837DL	950x500x1950/2100	cabinet divided vertically, left side open cabinet with 3 slidable hooks, right side with 3 storage shelves of adjustable height and 2 folding doors
3	54838DL	500x500x1950/2100	with 3 storage shelves of adjustable height and 1 folding door
	54839DL	950x500x1950/2100	with 3 storage shelves of adjustable height and 2 folding doors
4	54840DL	500x500x1950/2100	Simple design, only upper storage shelf is welded, 1 folding door
	54841DL	950x500x1950/2100	Simple design, only upper storage shelf is welded, 2 folding doors

### Clothes lockers

- » manufactured from stainless steel material no. 1.4301
- » matt ground finish, grain 240
- » with angled roof
- » with ventilation holes in the base and doors
- » ground clearance 150 mm
- » each compartment has an upper and lower storage shelf
- » see the table for other cabinet design options
- » lockable, see table for lock variations
- » with adjustable plastic gliders for balancing out ground unevenness



1



2



3



4



5



6

Fig.	Item no.	Dimensions in mm WxDxH	Basic frame	Lock variations
1	54833VL	500x500x1950/2100	With two compartments, each with a folding door, can be locked separately, 3 slidable hooks per compartment	locking handle for padlock
	54833ZL	500x500x1950/2100	With two compartments, each with a folding door, can be locked separately, 3 slidable hooks per compartment	cylinder sash lock (keyed-to-differ, incl. 2 keys per compartment)
2	54833VG	500x500x1950/2100	With two compartments, each with a folding door, can be locked separately, 3 slidable hooks per compartment, doors perforated throughout	locking handle for padlock
	54833ZG	500x500x1950/2100	With two compartments, each with a folding door, can be locked separately, 3 slidable hooks per compartment, doors perforated throughout	cylinder sash lock (keyed-to-differ, incl. 2 keys per compartment)
3	54835VL	950x500x1950/2100	With 4 compartments, each with a folding door, can be locked separately, 3 slidable hooks per compartment	locking handle for padlock
	54835ZL	950x500x1950/2100	With 4 compartments, each with a folding door, can be locked separately, 3 slidable hooks per compartment	cylinder sash lock (keyed-to-differ, incl. 2 keys per compartment)
4	54835VG	950x500x1950/2100	With 4 compartments, each with a folding door, can be locked separately, 3 slidable hooks per compartment, doors perforated throughout	locking handle for padlock
	54835ZG	950x500x1950/2100	With 4 compartments, each with a folding door, can be locked separately, 3 slidable hooks per compartment, doors perforated throughout	cylinder sash lock (keyed-to-differ, incl. 2 keys per compartment)
	54832VL	500x500x1950/2100	one compartment with 1 folding door, compartment divided in the middle (clean/dirty separation), 3 slidable hooks per area	locking handle for padlock

Fig.	Item no.	Dimensions in mm WxDxH	Basic frame	Lock variations
5	54832ZL	500x500x1950/2100	1 compartment with 1 folding door, compartment divided in the middle (clean/dirty separation), 3 slidable hooks per area	Cylinder sash lock (incl. 2 keys)
	54832VG	500x500x1950/2100	1 compartment with 1 folding door, compartment divided in the middle (clean/dirty separation), 3 slidable hooks per area, doors perforated throughout	locking handle for padlock
	54832ZG	500x500x1950/2100	1 compartment with 1 folding door, compartment divided in the middle (clean/dirty separation), 3 slidable hooks per area, doors perforated throughout	Cylinder sash lock (incl. 2 keys)
6	54834VL	950x500x1950/2100	2 compartments each with 1 folding door, compartments divided in the middle (clean/dirty separation), 3 slidable hooks per compartment	locking handle for padlock
	54834ZL	950x500x1950/2100	2 compartments each with 1 folding door, compartments divided in the middle (clean/dirty separation), 3 slidable hooks per compartment	cylinder sash lock (keyed-to-differ, incl. 2 keys per compartment)
	54834VG	950x500x1950/2100	2 compartments each with 1 folding door, compartments divided in the middle (clean/dirty separation), 3 slidable hooks per compartment, doors perforated throughout	locking handle for padlock
	54834ZG	950x500x1950/2100	2 compartments each with 1 folding door, compartments divided in the middle (clean/dirty separation), 3 slidable hooks per compartment, doors perforated throughout	cylinder sash lock (keyed-to-differ, incl. 2 keys per compartment)

#### Lock variations for clothes lockers / compartment lockers

- » DL = twist lock with key
- » VL = locking handle for padlocks (suitable shackle diameters 4.7-7.5 mm and 7.5-10 mm)
- » ZL = cylinder sash lock with key



## Clothes locker with bench seat

- » manufactured from stainless steel material no. 1.4301
- » matt ground finish, grain 240
- » with angled roof
- » with ventilation holes in base
- » doors perforated throughout
- » lockable, see table for lock variations
- » with bench seat H=420 mm, seating surface made of white plastic profiles
- » with adjustable plastic gliders for balancing out ground unevenness



1



2

Fig.	Item no.	Dimensions in mm WxDxH	Dimensions locker in mm WxDxH	Model	Lock variations
1	54832VGS	500x850x1950/2100	500x500x1400/1550	1 compartment with 1 folding door, compartment divided in the middle (clean/dirty separation), 3 slidable hooks per compartment, doors perforated throughout	Locking handle for padlock
	54832ZGS	500x850x1950/2100	500x500x1400/1550	1 compartment with 1 folding door, compartment divided in the middle (clean/dirty separation), 3 slidable hooks per compartment, doors perforated throughout	Cylinder sash lock (incl. 2 keys)
2	54834VGS	950x850x1950/2100	950x500x1400/1550	2 compartments each with 1 folding door, compartments divided in the middle (clean/dirty separation), 3 slidable hooks per compartment, doors perforated throughout	Locking handle for padlock
	54834ZGS	950x850x1950/2100	950x500x1400/1550	2 compartments each with 1 folding door, compartments divided in the middle (clean/dirty separation), 3 slidable hooks per compartment, doors perforated throughout	Cylinder sash lock (incl. 2 keys)



### Changing room benches

- » framework manufactured from stainless steel material no. 1.4301
- » seating surface and back rest made of white plastic profiles
- » with shoe storage
- » with adjustable plastic gliders for balancing out ground unevenness



1



2



3

Fig.	Item no.	Dimensions in mm WxDxH	Model
1	5484510SE	1000x350x420	Bench seat with shoe storage
	5484515SE	1500x350x420	Bench seat with shoe storage
	5484520SE	2000x350x420	Bench seat with shoe storage
2	5484510SEK	1000x350x420/1650	Bench seat with shoe storage, backrest and peg rack for clothes
	5484515SEK	1500x350x420/1650	Bench seat shoe storage, backrest and peg rack for clothes
	5484520SEK	2000x350x420/1650	Bench seat with shoe storage, backrest and peg rack for clothes
3	5484510SDK	1000x660x420/1650	Bench seat, for use on both sides, with shoe storage, backrest and peg rack for clothes
	5484515SDK	1500x660x420/1650	bench seat, for use on both sides, with shoe storage, backrest and peg rack for clothes
	5484520SDK	2000x660x420/1650	bench seat, for use on both sides, with shoe storage, backrest and peg rack for clothes

## Compartment lockers

- » manufactured from stainless steel material no. 1.4301
- » matt ground finish, grain 240
- » with angled roof
- » with ventilation holes in the doors
- » ground clearance 150 mm
- » one upper storage shelf per compartment and 3 slidable clothes hooks
- » lockable, see table for lock variations
- » with adjustable plastic gliders for balancing out ground unevenness



1



2

Fig.	Item no.	Dimensions in mm WxDxH	Model	Lock variations
1	54841VL	500x500x1950/2100	4 compartments (2x2)	Locking handle for padlock
	54841ZL	500x500x1950/2100	4 compartments (2x2)	cylinder sash lock (keyed-to-differ, incl. 2 keys per compartment)
2	54842VL	950x500x1950/2100	8 compartments (2x4)	Locking handle for padlock
	54842ZL	950x500x1950/2100	8 compartments (2x4)	cylinder sash lock (keyed-to-differ, incl. 2 keys per compartment)

### Valuables lockers

- » manufactured from stainless steel material no. 1.4301
- » matt ground finish, grain 240
- » with angled roof
- » ground clearance 150 mm
- » internal dimensions of compartment: approx. 350x210 mm
- » doors in double-walled design
- » each compartment can be individually locked with a safety lock (2 keys for each included)
- » with adjustable plastic gliders for balancing out ground unevenness



1



2

Fig.	Item no.	Dimensions in mm WxDxH	Model	Internal dimensions of compartment in mm WxDxH
1	54843S	500x500x1950/2100	10 compartments (5x2)	248x134x320
2	54844S	950x500x1950/2100	20 compartments (5x4)	236x134x320

## Standing desks

- » manufactured from stainless steel material no. 1.4301
- » matt ground finish, grain 240
- » angled writing surface with anti slip edge
- » writing surface can be folded upwards, storage compartment underneath
- » see the table for basic frame design
- » completely welded design
- » ground clearance 300 mm
- » with adjustable plastic gliders for balancing out ground unevenness
- » mobile design has 4 swivel castors (2x with stop), D=100 mm, with rubber tyres and galvanised castor housing



1



2



3

Fig.	Item no.	Dimensions in mm WxDxH	Model	Basic frame
1	5540100	600x500x1200	stationary	non-lockable, open design
	55401FB	600x500x1200	mobile	non-lockable, open design
	5540200	600x500x1200	stationary	lockable, open design
	55402FB	600x500x1200	mobile	lockable, open design
2	5540300	600x500x1200	stationary	non-lockable, cabinet with folding door
	55403FB	600x500x1200	mobile	non-lockable, cabinet with folding door
	5540400	600x500x1200	stationary	lockable, cabinet with folding door
	55404FB	600x500x1200	mobile	lockable, cabinet with folding door

### Wall-mounted desks

- » manufactured from stainless steel material no. 1.4301
- » matt ground finish, grain 240
- » angled writing surface with anti-slip edge
- » writing surface can be folded upwards, storage compartment underneath
- » for wall mounting
- » mounting equipment is not included in delivery



1

Fig.	Item no.	Dimensions in mm WxDxH	Model
1	5560100	600x500x100/200	non-lockable
	5560200	600x500x100/200	lockable

### Step-type working table

- » manufactured from stainless steel material no. 1.4301
- » cylindrical ground finish
- » upper board material thickness 1.5 mm
- » with 50 mm upstand at back
- » total depth 700 mm
- » step depth 300 mm
- » step height 30 mm
- » see the table for basic frame design
- » completely welded design
- » cutting boards are not included in delivery, please order separately
- » ground clearance 300 mm
- » with adjustable plastic gliders for balancing out ground unevenness
- » model that can be dismantled available on request



1



2

Fig.	Item no.	Dimensions in mm WxDxH	Basic frame	Brown cutting board	White cutting board
1	57201B0	1200x700x900	storage shelf	5578200	5576200
	57202B0	1500x700x900	storage shelf	5578300	5576300
	57203B0	1800x700x900	storage shelf	5578400	5576400
	57204B0	2000x700x900	storage shelf	5578500	5576500
2	57201R0	1200x700x900	storage rack	5578200	5576200
	57202R0	1500x700x900	storage rack	5578300	5576300
	57203R0	1800x700x900	storage rack	5578400	5576400
	57204R0	2000x700x900	storage rack	5578500	5576500

### Small step-type working tables

- » manufactured from stainless steel material no. 1.4301
- » cylindrical ground finish
- » upper board material thickness 1.5 mm
- » with upstand on three sides 100 mm, on the edge up to the step
- » total depth 900 mm
- » step depth 400 mm
- » step height 30 mm
- » see the table for basic frame design
- » completely welded design
- » cutting boards are not included in delivery, please order separately
- » ground clearance 300 mm
- » with adjustable plastic gliders for balancing out ground unevenness
- » model that can be dismantled available on request



1

Fig.	Item no.	Dimensions in mm WxDxH	Basic frame	Brown cutting board	White cutting board
1	50201B0	1500x900x900	storage shelf	5589400	5573400
	50203B0	2000x900x900	storage shelf	5589600	5573600
	50201R0	1500x900x900	storage rack	5589400	5573400
	50203R0	2000x900x900	storage rack	5589600	5573600

### Double-step-type working tables

- » manufactured from stainless steel material no. 1.4301
- » cylindrical ground finish
- » upper board material thickness 1.5 mm
- » step depth 400 mm
- » step height 30 mm
- » see the table for basic frame design
- » completely welded design
- » cutting boards are not included in delivery, please order separately
- » ground clearance 300 mm
- » with adjustable plastic gliders for balancing out ground unevenness



1

Fig.	Item no.	Dimensions in mm WxDxH	Basic frame	Brown cutting board	White cutting board
	50402B0	2000x1000x900	storage shelf	2x 5589600	2x 5573600
	51402B0	2000x1200x900	storage shelf	2x 5589600	2x 5573600
	50403B0	2400x1000x900	storage shelf	4x 5589300	4x 5573300
	51403B0	2400x1200x900	storage shelf	4x 5589300	4x 5573300
<b>1</b>	50402R0	2000x1000x900	storage rack	2x 5589600	2x 5573600
	51402R0	2000x1200x900	storage rack	2x 5589600	2x 5573600
	50403R0	2400x1000x900	storage rack	4x 5589300	4x 5573300
	51403R0	2400x1200x900	storage rack	4x 5589300	4x 5573300



### Carving tables

- » manufactured from stainless steel material no. 1.4301
- » tubular framework for storing whole cutting boards
- » with side mounting brackets
- » see the table for basic frame design
- » completely welded design
- » cutting boards are not included in delivery, please order separately
- » ground clearance 300 mm
- » with adjustable plastic gliders for balancing out ground unevenness



1

Fig.	Item no.	Dimensions in mm WxDxH	Basic frame	Brown cutting board	White cutting board
1	55631R0	1500x800x900	storage rack	5598400	5597400
	55633R0	2000x800x900	storage rack	5598600	5597600

### Beaded edge tables

- » manufactured from stainless steel material no. 1.4301
- » cylindrical ground finish
- » upper board material thickness 1.5 mm
- » with continuous beaded edging
- » with outlet nozzle Ø 20 mm for tube connection at the front left
- » see the table for basic frame design
- » completely welded design
- » ground clearance 300 mm
- » with adjustable plastic gliders for balancing out ground unevenness
- » compatible grooved cutting boards on request



Fig.	Item no.	Dimensions in mm WxDxH	Basic frame
	50301B0	1500x1000x900	storage shelf
	50302B0	2000x1000x900	storage shelf
	50303B0	2400x1000x900	storage shelf
<b>1</b>	50301R0	1500x1000x900	storage rack
	50302R0	2000x1000x900	storage rack
	50303R0	2400x1000x900	storage rack

### Stuffing tables

- » manufactured from stainless steel material no. 1.4301
- » cylindrical ground finish
- » upper board material thickness 1.5 mm
- » with upstand on three sides,
- » right upstand up to half way (to pitch stuffing machine)
- » beaded edging at the front
- » with outlet nozzle Ø 20 mm for tube connection at the front left
- » see the table for basic frame design
- » completely welded design
- » ground clearance 300 mm
- » with adjustable plastic gliders for balancing out ground unevenness
- » compatible grooved cutting boards on request



Fig.	Item no.	Dimensions in mm WxDxH	Basic frame
1	50101B0	1500x900x900	storage shelf
	50103B0	2000x900x900	storage shelf
	50104B0	2400x900x900	storage shelf
	50101R0	1500x900x900	storage rack
	50103R0	2000x900x900	storage rack
	50104R0	2400x900x900	storage rack

### Packaging tables

- » manufactured from stainless steel material no. 1.4301
- » cylindrical ground finish
- » stable design with tubular frame under upper board
- » upper board material thickness 1.5 mm
- » flat upper board, 100 mm bevel on all sides
- » legs indented inwards
- » see the table for basic frame design
- » completely welded design
- » ground clearance 300 mm
- » with adjustable plastic gliders for balancing out ground unevenness



Fig.	Item no.	Dimensions in mm WxDxH	Basic frame
	57401B0	1200x700x900	storage shelf
	57402B0	1500x700x900	storage shelf
	57403B0	1800x700x900	storage shelf
1	57401R0	1200x700x900	storage rack
	57402R0	1500x700x900	storage rack
	57403R0	1800x700x900	storage rack

**Meat crate tables**

- » manufactured from stainless steel material no. 1.4301
- » matt ground finish, grain 240
- » flat upper board, 40 mm bevel
- » continuous bracing
- » completely welded design
- » ground clearance 300 mm
- » with adjustable plastic gliders for balancing out ground unevenness



1

Fig.	Item no.	Dimensions in mm WxDxH
1	7350100	600x600x500
	7350200	500x500x500

### Machine tables

- » manufactured from stainless steel material no. 1.4301
- » matt ground finish, grain 240
- » stable design with tubular frame under upper board
- » with extra stable upper board material thickness 2.0 mm
- » flat upper board - 50 mm bevel on all sides
- » with continuous bracing
- » completely welded design
- » stationary or mobile
- » mobile design has 4 swivel castors (2x with stop), D=125 mm, with rubber tyres and stainless steel castor housing
- » ground clearance stationary design 150 mm, mobile design 130 mm
- » stationary with adjustable plastic gliders for balancing out ground unevenness



Fig.	Item no.	Dimensions in mm WxDxH	Model
------	----------	---------------------------	-------

	7350300	680x680x850	stationary
	7350400	850x850x850	stationary
<b>1</b>	73503FB	680x680x850	mobile
	73504FB	850x850x850	mobile

### Chopping block base frame

- » manufactured from stainless steel material no. 1.4301
- » tubular framework for storing plastic chopping blocks, height 100 mm
- » with side mounting brackets
- » see the table for basic frame design
- » completely welded design
- » chopping blocks are not included in delivery, please order separately
- » with swivel leg D=75 mm



Fig.	Item no.	Dimensions in mm	Chopping block white plastic
1	H55602K0	400x400x800	5585700
	H55604K0	500x500x800	5585900
	H55605K0	600x400x800	5586000
	H55606K0	600x600x800	5586100





**Aluminium shelf unit, can be dismantled**

- » manufactured from aluminium AlMgSi 0.5
- » cylindrical ground finish
- » The shelf unit is delivered in pieces for self-assembly
- » With 4 shelves which can be mounted at any height
- » load capacity per shelf 85 kg / linear metre
- » height 1800 mm
- » material for assembly included in delivery
- » with adjustable plastic gliders to balance out surface unevenness



1

Fig.	Item no.	Dimensions in mm WxD	Item no. Additional shelf including material for assembly, fits dimensions of shelf unit
1	5812100	930x430	5819100
	5812200	1430x430	5819200
	5812300	1930x430	5819300
	5812400	2430x430	5819400
	5816100	930x550	5819500
	5816200	1430x550	5819600
	5816300	1930x550	5819700
	5816400	2430x550	5819800

### Stainless steel shelf unit, can be dismantled

- » manufactured from stainless steel article no. 1.4301
- » cylindrical ground finish
- » the shelf unit is delivered in pieces for self-assembly
- » with 4 shelves, adjustable to 200 mm distance in height
- » load capacity per shelf 85 kg / linear metre
- » height 1800 mm
- » material for assembly included in delivery
- » with adjustable plastic gliders to balance out surface unevenness



Fig.	Item no.	Dimensions in mm WxD	Item no. Additional shelf including material for assembly, fits dimensions of shelf unit
------	----------	-------------------------	--

<b>1</b>	5850100	1000x420	5858500
	5850200	1200x420	5858600
	5850300	1400x420	5858700
	5850400	1600x420	5858800
	5850500	1800x420	5858900
	5850600	2000x420	5859000
	5880100	1000x540	5859100
	5880200	1200x540	5859200
	5880300	1400x540	5859300
	5880400	1600x540	5859400
	5880500	1800x540	5859500
	5880600	2000x540	5859600

### Additional unit legs to form extension (2 needed)

Fig.	Item no.	Height
	9901073	1800 mm

**Shelf unit, welded**

- » manufactured from stainless steel article no. 1.4301
- » matt ground finish, grain 240
- » welded design
- » with 4 shelves
- » shelf depth 400 mm, height 1800 mm
- » distance between levels 405 mm, overall clearance
- » ground clearance 405 mm
- » load capacity per shelf 85 kg / linear metre
- » with adjustable plastic gliders to balance out surface unevenness



**Fig.**    **Item no.**                      **Dimensions in mm**  
**WxDxH**

<b>1</b>	5820100	900x400x1800
	5820200	1000x400x1800
	5820300	1200x400x1800
	5820400	1400x400x1800
	5820500	1500x400x1800
	5820600	1600x400x1800
	5820700	1800x400x1800
	5820800	1900x400x1800
	5820900	2000x400x1800

### Spice rack

- » manufactured from stainless steel article no. 1.4301
- » matt ground finish, grain 240
- » welded design
- » with 2 hanging hooks for wall mounting



Fig.	Item no.	Dimensions in mm WxDxH	Number of shelves
------	----------	---------------------------	-------------------

<b>1</b>	7240100	750x250x360	2
	7240200	1000x250x360	2
	7250100	750x250x360	3
	7250200	1000x250x360	3

**Sausage-hanging frame**

- » manufactured from stainless steel article no. 1.4301
- » 2B finish
- » freestanding
- » distance between levels 300 mm
- » with recesses for smoking skewers



Fig.	Item no.	Dimensions in mm WxDxH	Number of levels
1	5311500	1000x550x1940	5

### Euro-norm shelf unit with shelves

- » manufactured from stainless steel article no. 1.4301
- » cylindrical ground finish
- » With 3 shelves
- » Welded at an angle with a forward tilt
- » With an upstand at front to prevent slipping
- » Distance between levels 470 mm, overall clearance
- » Load capacity per shelf 85 kg / linear metre
- » Height at back: 1430 mm
- » Height at front: 1320 mm
- » Without Euro-norm boxes
- » with adjustable plastic gliders to balance out surface unevenness
- » ground clearance at front: 150 mm



1

Fig.	Item no.	Dimensions in mm WxDxH	Number of E boxes
1	5830100	1340x620x1430	3x3
	5830200	1760x620x1430	3x4

**Euro-norm shelf unit with hanging rails**

- » manufactured from stainless steel article no. 1.4301
- » With welded rails or with rails which can be removed for storage of Euro-norm boxes
- » designed according to customer needs
- » Please inform us of your requirements



#### Shelving system A59

- » manufactured from stainless steel material no. 1.4301
- » matt ground finish, grain 240
- » shelves with upstand at back
- » The height of the shelves can be adjusted using the wall rails
- » One set contains 2 wall rails of 735 mm in length and 2 wall consoles per shelf
- » Wall attachment materials are not included in the delivery



Fig.	Item no. Shelf set		Dimensions Shelves in mm WxD	Item no. Additional shelf incl. 2 wall consoles
	1 2 shelves	2 3 shelves		
	A5930802	A5930803	800x300	A593080B0
	A5930102	A5930103	1000x300	A593010B0
	A5930122	A5930123	1200x300	A593012B0
	A5930142	A5930143	1400x300	A593014B0
	A5930152	A5930153	1500x300	A593015B0
	A5940802	A5940803	800x400	A594080B0
	A5940102	A5940103	1000x400	A594010B0
	A5940122	A5940123	1200x400	A594012B0
	A5940142	A5940143	1400x400	A594014B0
	A5940152	A5940153	1500x400	A594015B0

#### Additional wall rails

Fig.	Item no.	Length
	A591575WS	735 mm
	A591510WS	985 mm
	A591515WS	1470 mm



**Shelving system B59**

- » manufactured from stainless steel material no. 1.4301
- » ideal for food storage in cooled and uncooled rooms
- » also for storage of sterile supplies, for example in hospitals, nursing departments and laboratories
- » Shelving systems of the desired size can be created by combining shelf stands, shelf inserts and diagonal stabilising braces in the appropriate quantity and dimensions
- » Please be aware that the dimensions given are nominal dimensions
- » Available depth of the shelves = nominal dimension - 67 mm (total depth of the shelf corresponds to the nominal dimension)
- » Available width of the shelves between the suspension lugs = nominal dimension - 25 mm
- » max. bay load 1200 kg
- » For shelf load see table (load capacity per shelf)
- » Load data only apply for evenly distributed weight and are given in kg





**Fig. Shelf stands**

	Height in mm	Item no.		
		Depth 400 mm	Depth 500 mm	Depth 600 mm
<b>1</b>	1500	591500-400	591500-500	591500-600
	1800	591800-400	591800-500	591800-600
	2000	592000-400	592000-500	592000-600

**Fig. Shelves**

Fig.	Shelves		Item no.			Shelf load
	Width in mm	Depth 400 mm	Depth 500 mm	Depth 600 mm	Suitable diagonal brace	Load capacity per shelf in kg
2	600	590601-400	590601-500	590601-600	590600-DK	200
	800	590801-400	590801-500	590801-600	590800-DK	200
	900	590901-400	590901-500	590901-600	590900-DK	200
	1000	591001-400	591001-500	591001-600	591000-DK	200
	1200	591201-400	591201-500	591201-600	591200-DK	150
	1400	591401-400	591401-500	591401-600	591400-DK	125
	1500	591501-400	591501-500	591501-600	591500-DK	125

**Fig. Item no. Description Purpose of use**

591000-EV	Corner connection bracket	Only needed when assembling shelf system around a corner (2 per shelf)
591000-WB	Wall mounting	For attaching the shelf unit to the wall in accordance with accident prevention regulations when the height of the shelf unit is more than 5 times the depth of the shelf unit.

- » manufactured from stainless steel material no. 1.4301
- » matt ground finish, grain 240
- » with 50 mm upstand at back
- » designs with 1 or 2 basins
- » optionally with right-hand basin (-BR) or left-hand basin (-BL)
- » each with a lining on three sides
- » see the table for other design options for the basic frame
- » completely welded design
- » with adjustable plastic gliders for balancing out ground unevenness
- » delivery includes: 1 2" tube overflow valve per basin
- » delivery comes without a tap or siphon
- » Please note: in the model with sliding door, the door opening is only 280 mm high



Fig.	Item no.	Basin lining	Storage shelf / rack		Cabinet with sliding doors	Cabinet with folding doors	Dimensions in mm WxDxH	Number of basins	Basin size in mm WxDxH
1	H511110 □ -BR / -BL	0	1	2	3	4	1200x600x900	1	400x400x200
	H511120 □ -BR / -BL	0	1	2	3	4	1200x700x900	1	500x500x250
	H511130 □ -BR / -BL	0	2	1	3	2	1400x700x900	1	600x500x250
	H511210 □ -BR / -BL	0	1	2	3	4	1500x600x900	2	400x400x250
	H511230 □ -BR / -BL	0	1	2	5	3	1800x600x900	2	500x400x250
	H511250 □ -BR / -BL	0	1	2	3	4	1600x700x900	2	400x500x250
	H511260 □ -BR / -BL	0	1	2	3	4	1900x700x900	2	500x500x250
	H511270 □ -BR / -BL	0	1	2	3	4	2000x700x900	2	500x500x250

## Sink units with extension for commercial dishwashers

- » manufactured from stainless steel material no. 1.4301
- » matt ground finish, grain 240
- » with 50 mm upstand at back
- » models with 1 or 2 basins
- » optionally with right-hand basin (-BR) or left-hand basin (-BL)
- » extension for dishwasher under draining board
- » each with a lining on two sides
- » with optional storage shelf or closed cupboard area with folding doors
- » model with 2 basins each with two folding doors
- » completely welded design
- » with adjustable plastic gliders for balancing out ground unevenness
- » delivery includes: 1 2" tube overflow valve per basin
- » delivery comes without a tap or siphon



Fig.	Item no.	Storage shelf	Cabinet with folding doors	Dimensions in mm WxDxH	Number of basins	Basin size in mm WxDxH
<b>1</b>	H611110 □ -BR / -BL	<b>1</b> 0	4	1200x600x900	1	400x400x200
	H611120 □ -BR / -BL	0	4	1200x700x900	1	500x500x250
	H611130 □ -BR / -BL	0	4	1400x700x900	1	600x500x250
<b>2</b>	H611210 □ -BR / -BL	0	<b>2</b> 4	1500x600x900	2	400x400x250
	H611230 □ -BR / -BL	0	4	1800x600x900	2	500x400x250
	H611250 □ -BR / -BL	0	4	1600x700x900	2	400x500x250
	H611260 □ -BR / -BL	0	4	1900x700x900	2	500x500x250
	H611270 □ -BR / -BL	0	4	2000x700x900	2	600x500x250

### Utility sink

- » manufactured from stainless steel material no. 1.4301
- » matt ground finish, grain 240
- » with 50 mm upstand at back
- » models with 1 or 2 basins
- » each with a lining on three sides
- » see the table for underframe design
- » completely welded design
- » with adjustable plastic gliders for balancing out ground unevenness
- » delivery includes: 1 2" tube overflow valve per basin
- » delivery comes without a tap or siphon



1



2



3



4

Fig.	Item no.	sink lining only	Storage shelf	Storage rack	Dimensions in mm WxDxH	Number of basins	Basin size in mm WxDxH
1	H510110 □	1 0	1	2	500x600x900	1	400x400x200
	H510120 □	0	1	2	500x700x900	1	400x400x200
	H510130 □	0	1	2	700x700x900	1	500x500x250
	H510210 □	2 0	3 1	4 2	1200x600x900	2	500x400x250
	H510220 □	0	1	2	1200x700x900	2	500x500x250
	H510230 □	0	1	2	1400x700x900	2	600x500x250

## Hand-washing / utility sink combination

- » manufactured from stainless steel material no. 1.4301
- » matt ground finish, grain 240 (except upper plate)
- » completely welded design
- » with a hand-washing basin on top and a utility sink below
- » dimensions of hand-washing basin 340x240x150 mm
- » dimensions of utility basin 400x400x250 mm
- » with 40 mm upstand at back
- » each with a lining on three sides
- » lower basin with removable storage rack
- » see table for tap design options
- » with adjustable plastic gliders for balancing out ground unevenness
- » ground clearance 150 mm
- » delivery including taps and siphon, 2x stopper valve 1 1/2"



1



2

Fig.	Item no.	Dimensions in mm WxDxH	Tap design options
1	6870402	500x600x920	Opto + two-handle mixer tap with swivel outlet
	6870403	500x700x920	Opto + two-handle mixer tap with swivel outlet
2	6870404	500x600x920	two-handle mixer tap with swivel outlet
	6870404E	500x600x920	one-handle mixer tap elbow-operated with swivel outlet
	6870405	500x700x920	two-handle mixer tap with swivel outlet
	6870405E	500x700x920	one-handle mixer tap elbow-operated with swivel outlet

### Hand-washing basin

- » manufactured from stainless steel material no. 1.4301
- » with basin lining on three sides, matt ground finish, grain 240
- » deep-drawn weld-in sink with a smooth surface
- » Delivery includes: wall mounting rails, tap outlet and stopper valve 1 1/2"
- » Delivery comes without a siphon
- » An optimal water flow can be reached at a water pressure between 2 and 4 bar

Available in 4 design options:

- » **Knee-operated sink:** Sink is operated by pressing against the front panel behind which a self-closing valve is installed. With premixer for pre-setting the temperature, connection 3/8"

- » **Optical sensor:** Sink is operated without contact by an optical sensor built into the front panel which controls a 230 V solenoid valve. Sink is fully wired on delivery. Premixer for pre-setting the temperature, connection 3/8"
- » **Optical sensor and continuous flow heater:** Sink is operated without contact by an optical sensor built into the front panel which controls a 230 V solenoid valve. The additional built-in continuous flow heater has a connection load of 230V, the power consumption is 3.5 kW, connection 3/8". Sink is fully wired on delivery.
- » **Optoelectronic sensor tap:** Sink is operated without contact by an optoelectronic sensor built into the outlet tap with a connection load of 230 V, operating voltage 6 V and additionally 4 1.5 V AA batteries, premixer for pre-setting temperature, connection 3/8"



Fig.	Item no.	Dimensions in mm WxDxH	Basin measurements in mm WxDxH	Model
1	5330100	400x310x240	325x230x130	Knee-operated
2	5330500	400x310x240	325x230x130	Optical sensor
3	5330500-Opt	400x310x240	325x230x130	Optoelectronic sensor tap
	5310100-N	470x410x240	370x340x175	Knee-operated
	5310500-N	470x410x240	370x340x175	Optical sensor
	5350500	470x410x240	370x340x175	Optical sensor / continuous flow heater
	5310500-Opt-N	470x410x240	370x340x175	Optoelectronic sensor tap
	5320100	550x450x270	500x310x150	Knee-operated
	5320600	550x450x270	500x310x150	Optical sensor
	5320600-Opt	550x450x270	500x310x150	Optoelectronic sensor tap

## Hygiene unit

- » consisting of a hand-washing basin, soap dispenser and paper towel dispenser
- » mounted on splash protection wall 470x800 mm
- » manufactured from stainless steel material no. 1.4301, matt ground finish
- » dimensions of hand-washing basin: 470x410x240 mm
- » with optional knee operation (see item no. 5310100-N) or with optoelectric sensor tap (see item no. 5350500-Opt-N)
- » soap dispenser item no. 53410A2-001
- » paper towel dispenser item no. 53412A2
- » wall mounting using suspension eye bolts



1



2

Fig.	Item no.	Dimensions in mm WxDxH	Design of hand-washing basin
1	5310102	470x430x800	knee-operated
2	5310502	470x430x800	with sensor tap



### Wash trough / single washing bay

- » manufactured from stainless steel material no. 1.4301
- » matt ground finish, grain 240
- » with outlet taps
- » splash protection wall connected smoothly with body of basin
- » operated with sensor switch
- » mains voltage 230 V, control voltage 24 V
- » electricity supply through fully wired power pack
- » with thermostatic water mixer with backflow preventer
- » water drainage in the middle, stopper valve 1 1/2"
- » single washing bay: with manual premixer for pre-setting of temperature, with no backflow preventer
- » wall-mounted design is assembled using wall mounting rails



1



2



3

Fig.	Item no.	Dimensions in mm WxDxH	Washing bays	Model
1	51002WH	1300x500x270/710	2	wall mounted
	51002SA	1300x500x270/1290	2	freestanding
	51003WH	1900x500x270/710	3	wall mounted
2	51003SA	1900x500x270/1290	3	freestanding
	51004WH	2500x500x270/710	4	wall mounted
	51003SA	2500x500x270/1290	4	freestanding
3	5310700	450x490x270/795	1	wall mounted

## Soap and disinfectant dispenser

- » manufactured from stainless steel material no. 1.4301
- » matt ground finish, grain 240
- » for wall mounting
- » See the table for design options
- » all parts of model with stainless steel pump can be autoclaved
- » incl. empty cylinder with 1000 ml volume



1



2



3

Fig.	Item no.	Dimensions in mm WxDxH	Model	Pump
2	53410A2	98x90x325	with lockable front panel which can be folded down, with filling level display	stainless steel pump
1	53410A2-001	113x87x296	with removable front panel and filling level display	stainless steel pump
3	53410A2-OB	98x90x280	without front panel	plastic pump

### Dispenser for folded paper towels

- » manufactured from stainless steel material no. 1.4301
- » matt ground finish, grain 240
- » for wall mounting
- » lockable front flap with filling level display



1

Fig.	Item no.	Dimensions in mm WxDxH	Capacity
1	53412A2	275x130x330	500 sheets
	53416A2	275x130x440	750 sheets

## Dispenser for hygiene boxes

- » manufactured from stainless steel material no. 1.4301
- » matt ground finish, grain 240
- » for wall mounting
- » available for various different hygiene products (see table)



1



2



3

Fig.	Item no.	Dimensions in mm WxDxH	for capacity
1	53415A2	115x35x290	Paper hygiene bag suitable for dimensions: 110x280 mm
2	53417A2	125x75x240	Disposable gloves suitable for cardboard boxes 125x75x240 mm
3	53414A2	400x180x520	Disposable head covers / hair nets

First aid cabinet

- » manufactured from stainless steel material no. 1.4301
- » matt ground finish, grain 240
- » with first aid symbol
- » for wall mounting
- » with 2 shelves
- » with lockable folding door



1

Fig.	Item no.	Dimensions in mm WxDxH
1	7140000	300x250x400
	7140100	500x250x400

## Waste-paper baskets

- » manufactured from stainless steel material no. 1.4301
- » Wall mounting possible



1



2

Fig.	Item no.	Dimensions in mm WxDxH	Model
1	53413A2	350x250x400	stainless steel plating, matt ground finish, grain 240 Wall mounting equipment
2	53413GI	350x250x400	Wire mesh, without wall mounting equipment
	53413GIH		Wall bracket for wire mesh waste-paper basket

### Waste containers and bin bag holders

- » manufactured from stainless steel material no. 1.4301
- » see the table for design options



Fig.	Item no.	Dimensions in mm WxDxH	Model	Size of bin bags
1	5350100	400x300x755	Waste container with swing lid and 2 lifting handles	80 litres
2	5340100	500x650x950	Bin bag holder with manually foldable lid, stationary	120 litres
	5340300	500x650x950	Bin bag holder with foldable lid, mobile	120 litres
	5340500	500x650x950	Bin bag holder with foot pedal-controlled foldable lid, stationary, with no floor plate	120 litres
3	5340600	500x650x950	Bin bag holder with foot pedal-controlled foldable lid, stationary, with floor plate to support the bin bag	80-120 litres

## Sterilisation basin for knives and cleavers

- » manufactured from stainless steel material no. 1.4301
- » matt ground finish, grain 240
- » models available for knives only or for knives and cleavers
- » for wall mounting
- » with warm insulation
- » with thermostatic regulation, pre-set at 85° C
- » with removable stainless steel knife insert
- » with removable overflow tube
- » water inflow D=10 mm
- » water outflow D=25 mm
- » connection load 230 V



1

Fig.	Item no.	Dimensions in mm WxDxH	Model	Heating capacity	Dry-run protection
1	5200100	200x160x385	for knives	1000 W	no
	5200100-001	200x160x385	for knives	1000 W	yes
	5200200	375x225x575	for knives and cleavers	2000 W	yes



**UV sterilisation cabinet for knives**

- » housing manufactured from stainless steel material no. 1.4301
- » matt ground finish, grain 240
- » with front door made of UV-opaque material
- » with UVC fluorescent lamp 36 W
- » suitable for a maximum of 10 knives
- » with a time switch
- » for wall mounting
- » connection load 230 V



1

Fig.	Item no.	Dimensions in mm WxDxH
1	5200400	520x150x670

## Sole cleaner

- » housing manufactured from stainless steel material no. 1.4301
- » matt ground finish, grain 240
- » automatic shoe and boot sole cleaner
- » controlled using sensor switch embedded in handle grip
- » input and dosage of cleaning / disinfecting agent controlled using the injection port and suction hose which are hung in the cleaning agent canister
- » power connection 400 V, 0.25 kW
- » fully wired with 16 A CEE connector
- » water connection 3/4", water drain DN 50



1

Fig.	Item no.	Dimensions in mm WxDxH	Model
1	6870000	483x685x1060	1 rotating sole cleaning brush

Sole cleaner, pass-through system

- » housing manufactured from stainless steel material no. 1.4301
- » matt ground finish, grain 240
- » automatic pass-through sole cleaner
- » for standard use in fixed direction of flow
- » controlled using light barriers which start the brushes when the system is entered and turns them off once the system is exited
- » input and dosage of cleaning / disinfecting agent controlled using the injection port and suction hose which are hung in the cleaning agent canister
- » Power connection 400 V, 0.5 kW
- » fully wired with 16 A CEE connector
- » water connection 3/4", water drain DN 50



1

Fig.	Item no.	Dimensions in mm WxDxH	Model
1	6870303	1700x850x1470	2 rotating sole cleaning brushes

## Manual boot cleaner

- » housing manufactured from stainless steel material no. 1.4301
- » matt ground finish, grain 240
- » manual boot shaft cleaning using hand cleaning brush with water connection
- » controlled using a foot switch
- » input and dosage of cleaning / disinfecting agent controlled using the tank integrated into the hand cleaning brush
- » water connection 3/4", water drain DN 50



1

Fig.	Item no.	Dimensions in mm WxDxH	Model
1	6871400	400x510x420	1 handbrush

### Boot cleaner

- » housing manufactured from stainless steel material no. 1.4301
- » matt ground finish, grain 240
- » automatic sole cleaner with additional hand washing brush for manual boot cleaning
- » sole cleaner is operated using sensor switch embedded in handle grip
- » hand washing brush is operated by manually opening the water tap
- » input and dosage of cleaning / disinfecting agent for sole cleaning brush controlled using the injection port and suction hose which are hung in the cleaning agent canister. The input for the hand cleaning brush comes from the integrated tank.
- » power connection 400 V, 0.25 kW
- » fully wired with 16 A CEE connector
- » water connection 3/4", water drain DN 50



1

Fig.	Item no.	Dimensions in mm WxDxH	Model
1	6870100	1000x676x1000	1 hand brush and 1 rotating sole cleaning brush

## Boot cleaner, sole and shaft cleaning

- » housing manufactured from stainless steel material no. 1.4301
- » matt ground finish, grain 240
- » automatic boot sole and boot shaft cleaner
- » controlled using sensor switch embedded in handle grip
- » the horizontal brushes clean the soles; the vertical brushes clean the boot shafts
- » input and dosage of cleaning / disinfecting agent controlled using the injection port and suction hose which are hung in the cleaning agent canister
- » power connection 400 V, 0.75 kW
- » fully wired with 16 A CEE connector
- » water connection 3/4", water drain DN 50



1

Fig.	Item no.	Dimensions in mm WxDxH	Model
1	6870300	865x760x1100	2 vertically and 1 horizontally rotating cleaning brushes

**Sole and shaft cleaning, pass-through system**

- » housing manufactured from stainless steel material no. 1.4301
- » matt ground finish, grain 240
- » automatic pass-through boot sole and boot shaft cleaner
- » for standard use in fixed direction of pass
- » The horizontal brushes clean the soles; the vertical brushes clean the boot shafts
- » Controlled using light barriers which start the brushes when the system is entered and turns them off once the system is exited
- » Input and dosage of cleaning / disinfecting agent controlled using the injection port and suction hose which are hung in the cleaning agent canister
- » power connection 400 V, 1.25 kW
- » fully wired with 16 A CEE connector
- » water connection 3/4", water drain DN 50



1



Fig.	Item no.	Dimensions in mm WxDxH	Model
1	6870301	1200x1600x1450	3 vertically and 2 horizontally rotating cleaning brushes

Apron and boot cleaner

- » housing manufactured from stainless steel material no. 1.4301
- » matt ground finish, grain 240
- » Manual apron and boot cleaning station
- » with foot lever for boot cleaning and a peg for hanging standard aprons
- » with two hand washing brushes for manual cleaning of aprons and boots
- » Hand washing brush is operated by manually opening the water tap at the side of the station
- » Input and dosage of cleaning / disinfecting agent controlled using the tank integrated into the hand cleaning brush
- » water connection 3/4", water drain DN 50

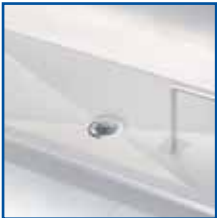


Fig.	Item no.	Dimensions in mm WxDxH	Model
1	6871500-003	1100x420x1800	2 handbrushes



### Apron and boot cleaner with automatic sole cleaning

- » housing manufactured from stainless steel material no. 1.4301
- » matt ground finish, grain 240
- » Manual apron and boot cleaning station with automatic sole cleaning brush
- » With foot lever for boot cleaning and a peg for hanging standard aprons
- » With two hand washing brushes for manual cleaning of aprons and boots
- » Sole cleaning brush is operated using sensor switch embedded in handle grip
- » Hand washing brushes are operated by manually opening the water tap at the side of the station
- » Input and dosage of cleaning / disinfecting agent for sole cleaning brush controlled using the injection port and suction hose which are hung in the cleaning agent canister. The input for the hand cleaning brush comes from the integrated tank
- » power connection 400 V, 0.25 kW
- » fully wired with 16 A CEE connector
- » water connection 3/4", water drain DN 50



1



Fig.	Item no.	Dimensions in mm WxDxH	Model
1	6871600	1298x676x1980	2 hand brushes and 1 rotating sole cleaning brush

## Apron cleaning cabinet

- » housing manufactured from stainless steel material no. 1.4301
- » matt ground finish, grain 240
- » Walk-in station for cleaning aprons / uniforms when still worn (shower)
- » with shower head fixed to the back wall, operated using foot switch
- » additional manually operated hand-washing brush and multi-purpose shower on the side walls
- » water inlet 1/2"
- » water outlet 1 1/2"
- » with removable rack for easy cleaning of the overflow tray



1

Fig.	Item no.	Dimensions in mm WxDxH	Model
1	6871601	700x800x1680	1 fixed shower head + 1 hand washing brush + 1 multi-purpose shower

**Hygiene centre**

- » manufactured from stainless steel material no. 1.4301
- » matt ground finish, grain 240



- » hygiene station for cleaning and disinfecting hands and shoe/boot soles, contains 1 rotating brush for sole cleaning 1 hand washing basin with sensor output 2 soap and disinfectant dispensers 53410A21 dispenser for folded paper towels 53416A2
- » loose accessories: 1 canister holder 1 wire mesh waste-paper basket 53413GI
- » sole cleaning brush is operated using sensor switch embedded in handle grip
- » hand washing basin operated using sensor outlet tap Input and dosage of cleaning / disinfectant is controlled using injector port and suction hose which are hung in the cleaning agent canister,
- » Power connection 230 V, 0.18 kW
- » fully wired with 230 V Schuko plug
- » Water connection 3/4" (sole cleaning) 1/2" for hot and cold water connection, water drain DN 32

1

**Fig.**    **Item no.**                    **Dimensions in mm**  
   **WxDxH**

<b>1</b>	6871900-N	740 (800)x500x1600
----------	-----------	--------------------

## Pass-through disinfection tray

- » manufactured from stainless steel material no. 1.4301
- » with slip-proof grating
- » with tube overflow valve 1 1/2"
- » stationary model with legs
- » with adjustable plastic gliders for balancing out ground unevenness
- » also available with other dimensions and with a floor drain



Fig.	Item no.	Dimensions in mm WxDxH	Zones
1	6872000	800x1000x150/300	Disinfecting
	6872100	800x1200x150/300	Disinfecting and draining

Access control with hand disinfection

- » manufactured from stainless steel material no. 1.4301
- » housing matt ground finish, grain 240
- » wall-mounted design
- » for standard use in a fixed direction of flow, can optionally be used in two directions
- » hand disinfection: Disinfectant spray system controlled using sensor switches, then the barrier is released for 10 seconds thus allowing access into the operating room
- » The barrier is released once hands have successfully been disinfected
- » Available for left or right side assembly (-L / -R)
- » Power connection 230 V, 0.12 kW
- » fully wired with 230 V Schuko plug
- » drainage through 1/2" hose connection

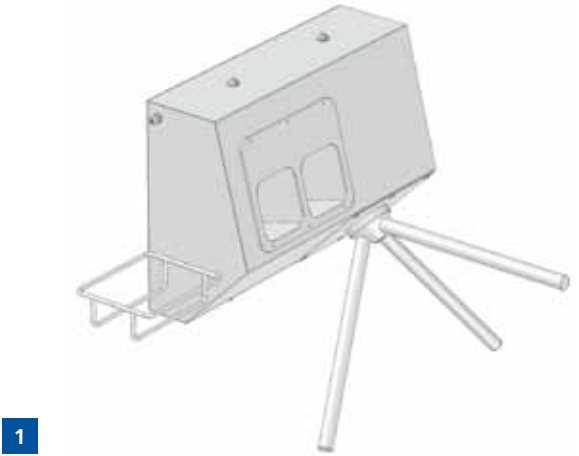


Fig.	Item no.	Dimensions in mm WxDxH	Functions
1	6891000-L / -R	750x800x545	Hand disinfection / barrier

## Pass-through disinfection system

- » housing manufactured from stainless steel material no. 1.4301
- » matt ground finish, grain 240
- » pass-through disinfection system for sole and hand disinfection
- » for standard use in a fixed direction of pass, can optionally be used in two directions
- » Function: System is entered through a grating which is located inside a sole disinfection basin. This ensures sole disinfection.
- » The level of disinfectant must be controlled and filled up manually
- » The next step is to walk through the slightly higher draining grid. At this point hands need to be held in the hand-disinfection basin.
- » Disinfectant spray system controlled using sensor switches, then the barrier is released for 10 seconds thus allowing access into the operating room
- » power connection 230 V, 0.12 kW
- » fully wired with 230 V Schuko plug
- » water connection 3/4", water drain DN 50
- » versions with hand disinfection on left- or right-hand side (item number -L/-R)
- » custom-made design with further functions possible

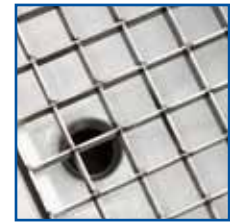


Fig.	Item no.	Dimensions in mm WxDxH	Functions
1	6892000-L /-R	2400x1000x1663	Sole and hand disinfection with mandatory operation and barrier

**Hygiene pass-through channel**

- » housing manufactured from stainless steel material no. 1.4301
- » matt ground finish, grain 240
- » hygiene pass-through channel for automatic sole cleaning and hand disinfection
- » for standard use in a fixed direction of pass, can optionally be used in two directions
- » Function: when system is entered by foot a light barrier starts the flow
- » a lamp in the hand disinfection basin prompts you to hold your hands in the openings
- » then a time-controlled nozzle sprays disinfectant on your hands
- » once the light goes out the sole cleaning brush begins cleaning for a programmed length of time
- » once the sole cleaning process has finished the barrier is released for 10 seconds thus allowing access into the operating room
- » Power connection 400 V, 0.5 kW
- » fully wired with 16 A CEE connector
- » water connection 3/4", water drain DN 50
- » versions with hand disinfection on left- or right-hand side (item number -L/-R)
- » Custom-made design with further functions possible



Fig.	Item no.	Dimensions in mm WxDxH	Functions
1	6893000-L /-R	1805x1000x1470	Hand disinfection and sole cleaning with one rotating brush, with mandatory operation and barrier, one-sided walk-in

We can develop and produce hygiene and disinfection systems matched to your operational needs. The following are examples of custom-made solutions.



Hygiene station that is used for sole and hand disinfection when entering the operating rooms and for automatic sole cleaning on exiting the operating rooms.



Hygiene system that is used for hand disinfection and sole cleaning/ disinfection or for boot shaft cleaning both on entering and leaving the operating rooms.



### Boot dryer, electrically heated

- » manufactured from stainless steel material no. 1.4301
- » matt ground finish, grain 240
- » with blower, electrically heated
- » with programmable timer
- » with ozone lamp to sterilise the drying air
- » Power: 2000 W
- » Connection load: 230 V
- » with adjustable plastic gliders for balancing out ground unevenness
- » sealing plugs for unused blower outlets optionally available



Fig.	Item no.	Dimensions in mm WxDxH	Model	Number of pairs of boots
	6871000-Pro	700x500x2000	one-sided configuration	10
<b>1</b>	6870900-Pro	1200x500x2000	one-sided configuration	20
	6870901-Pro	700x850x2100	two-sided configuration	20
	6871001-Pro	1350x850x2100	two-sided configuration	40

## Boot rack

- » manufactured from stainless steel material no. 1.4301
- » boot holders made of bent cylindrical tubing D=8mm
- » stationary, mobile or wall-mounted models available
- » see the table for design options
- » with adjustable plastic gliders for balancing out ground unevenness



Fig.	Item no.	Dimensions in mm WxDxH	Configuration	Number of pairs of boots	Model
1	6870112	1140x360x1800	one-sided	12	stationary
2	6870112-FB	1140x360x1900	one-sided	12	mobile
3	6870112	1020x360x1730	one-sided	12	wall mounted
	6870116	1400x360x1800	one-sided	16	stationary
	6870116-FB	1400x360x1900	one-sided	16	mobile
	6870116-WH	1340x360x1730	one-sided	16	wall mounted
	6870224	1140x900x1800	two-sided	24	stationary
	6870232	1400x900x1800	two-sided	32	stationary

### Peg rack

- » manufactured from stainless steel material no. 1.4301
- » for various different uses (see table)



Fig.	Item no.	Dimensions in mm WxDxH	Use	Model
1	5341252-2P	530x350x400	Boot rack	for 2 people
	5341252-4P	1070x350x400	Boot rack	for 4 people
	5341252-6P	1610x350x400	Boot rack	for 6 people
	5311253	750x130x200	Clog rack	for 2 people
2	5341254	750x90x165	Clothes hooks	for 4 people
	5341255	750x90x300	Clothes and helmet hooks	for 4 people

### Apron rack

- » manufactured from stainless steel material no. 1.4301
- » racks made from profiled tubing for holding apron hangers
- » delivery includes the appropriate number of hangers
- » matching apron hangers 6871000-BÜ also available separately
- » for design options see table

Fig.	Item no.	Dimensions in mm WxDxH	Number of apron hangers
1	6870100-003	1100x800x2000	10
	6870100-004	2050x800x2000	20



## Universal apron hangers

- » manufactured from stainless steel material no. 1.4301
- » round material D=8mm
- » with 2 slidable eyelet-topped hooks
- » with a dual hanging hook  
(prevents the hanger from turning)

Fig.	Item no.	Dimensions in mm WxDxH
1	5341257-2	1125x75x770



## Smoking trolleys

- » manufactured from stainless steel material no. 1.4301
- » with stable pushing handle
- » with water connection 3/4"
- » for up to 130 m hose 3/4"
- » mobile with 2 plastic wheels D=200mm

Fig.	Item no.	Dimensions in mm WxDxH
1	3240100	750x625x1000



## Hose holder

- » manufactured from stainless steel material no. 1.4301
- » available in 2 design options (see table)

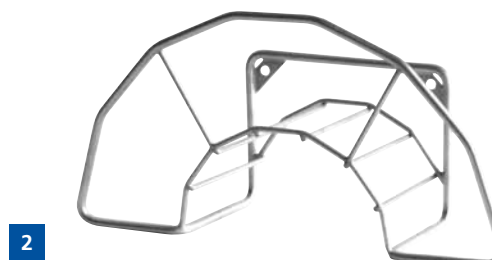


Fig.	Item no.	Dimensions in mm WxDxH	Model
1	5341250	3950x205x200	Stainless steel sheet, matt ground finish
2	534125GI	500x160x250	Wire mesh

**We can produce smoking trolleys according to your personal needs with regard to:**

- » design H-shaped, Z-shaped, box-shaped, double frame
- » number of levels and distances between levels
- » load capacity
- » rack type: corrugated profile, notched profile, angled profile, special shapes
- » reinforcements
- » wheel and wheel house designs
- » welded grids / gratings

You can also use our form for smoking trolleys to make your request!

Examples of custom-made smoking trolley designs:



### Standard designs

#### H-shaped smoking trolleys

- » manufactured from stainless steel material no. 1.4301
- » load capacity 500 kg
- » with 6 wheels made of polyamide fibre on overturning moment
- » either for sticks, grids or both
- » temperature range -20°C to +80°C
- » see the table for design



Fig.	Item no.	Dimensions in mm WxDxH	Number of levels	Use purpose	Rack shape
<b>1</b>	6521900	1021x985x1970	6	For 1000 mm sticks	Corrugated profile
	6521990	921x985x1970	6	For 900 mm sticks	Corrugated profile
	6521980	821x985x1970	6	For 800 mm sticks	Corrugated profile
<b>2</b>	6521901	1017x985x1970	6	For 1000 mm sticks / grids: 920x948 mm	Corrugated profile with grid rack
	6521991	917x985x1970	6	For 900 mm sticks / grids: 820x948 mm	Corrugated profile with grid rack
	6521981	817x985x1970	6	For 800 mm sticks / grids: 720x948 mm	Corrugated profile with grid rack
<b>3</b>	6521902	1014x985x1970	6	For grids: 920x948 mm	Angled rack
	6521992	914x985x1970	6	For grids: 820x948 mm	Angled rack
	6521982	814x985x1970	6	For grids: 720x948 mm	Angled rack

### Z-shaped smoking trolleys

- » manufactured from stainless steel material no. 1.4301
- » load capacity 500 kg
- » with 6 wheels made of polyamide fibre on overturning moment
- » either for sticks, grids or both
- » temperature range -20°C to +80°C
- » see the table for design



Fig.	Item no.	Dimensions in mm WxDxH	Number of levels	Use purpose	Rack shape
1	6521900-Z	1016x1020x1970	6	For sticks: 1000 mm	Corrugated profile
	6521990-Z	916x1020x1970	6	For sticks: 900 mm	Corrugated profile
	6521980-Z	816x1020x1970	6	For sticks: 800 mm	Corrugated profile
2	6521902-Z	1016x1020x1970	6	For grids: 920x948 mm	Angled rack
	6521992-Z	916x1020x1970	6	For grids: 820x948 mm	Angled rack
	6521982-Z	816x1020x1970	6	For grids: 720x948 mm	Angled rack



### Cooking grids

- » manufactured from stainless steel material no. 1.4301
- » standard designs fit our standard smoking trolleys
- » available as half and full grids
- » in closed or perforated design
- » grid height 30 mm
- » with two handles inside
- » material depth 2 mm with two support beams 20x3 mm



1



2

Item no.		Dimensions in mm WxDxH	Model	Load capacity	
Closed form	Perforated form			closed	perforated
<b>1</b> 652190Z1	<b>2</b> 652190L1	920x948x30	Full grid	max. 80 kg	max. 50 kg
652199Z1	652199L1	820x948x30	Full grid	max. 80 kg	max. 50 kg
652198Z1	652198L1	720x948x30	Full grid	max. 80 kg	max. 50 kg
652190Z2	652190L2	920x480x30	Half grid	max. 50 kg	max. 30 kg
652199Z2	652199L2	820x480x30	Half grid	max. 50 kg	max. 30 kg
652198Z2	652198L2	720x480x30	Half grid	max. 50 kg	max. 30 kg



### Grating

- » manufactured from stainless steel material no. 1.4301
- » standard designs fit our standard smoking trolleys
- » available as half and full grids
- » with corrugated grating or stamped grating, mesh size 30x30 mm, t=3 mm
- » grid height 30 mm
- » with 2 support beams
- » with two handles inside



1



2



3

Fig.	Item no.		Dimensions in mm WxDxH	Model	Load capacity
	<b>1 Corrugated grating</b>	<b>2 Stamped grating</b>			
	652190WG1	<b>3</b> 652190SG1	920x948x30	Full grid	max. 100 kg
	652199WG1	652199SG1	820x948x30	Full grid	max. 100 kg
	652198WG1	652198SG1	720x948x30	Full grid	max. 100 kg
	652190WG2	652190SG2	920x480x30	Half grid	max. 60 kg
	652199WG2	652199SG2	820x480x30	Half grid	max. 60 kg
	652198WG2	652198SG2	720x480x30	Half grid	max. 60 kg

Smoking sticks

- » manufactured from aluminium material number AlMgSi0.5
- » triangular smoking sticks "star profile"
- » Rack width: 29 mm, height: 25.86 mm
- » Material thickness of strip 1.2 mm
- » Diameter at end of strip 5.5 mm
- » with minimum burr
- » load capacity: 30 kg on 1000 mm when load is spread evenly
- » can also be delivered in other lengths



Fig.	Item no.	Length in mm
	7383400	800
	7382400	900
<b>1</b>	7381400	1000

### Smoking sticks

- » manufactured from stainless steel material no. 1.4301
- » triangular smoking stick "star profile"
- » Rack width: 26.5 mm, height: 22.5 mm
- » manufactured from cylindrical tubing with welded ends
- » load capacity: 30 kg on 1000 mm when load is spread evenly
- » can also be delivered in other lengths
- » available either with or without indentations



**Fig.**

	Item no.		Length in mm
	With indentations on all edges	Without indentations	
	7381400K-0800	7381400G-0800	800
	7381400K-0900	7381400G-0900	900
<b>1</b>	7381400K-1000	7381400G-1000	1000

## Smoking stick trolleys

- » manufactured from stainless steel material no. 1.4301
- » for transporting and storing smoking sticks
- » see the table for design



1



2



3

Fig.	Item no.	Dimensions in mm (WxDxH)	Model	Smoking stick capacity
1	3360200	600x400x710	Closed form with drainage slits, iron sheet housing Cylindrical ground finish, with dividing cross, 6 wheels D=150 mm made of polyamide fibre with breakdown torque	200 items
2	3360300	600x900x800	Open form, stable profile frame, closed back door, industrial design, with pushing handle and 6 wheels D=150 mm made of polyamide fibre with breakdown torque	500 items
3	3360200-024	800x450x1100	caddy form with a dividing cross at the top and the bottom with two pushing handles and 2 wheels D=150 mm made of polyamide fibre	200 items

**Sausage hanging trolley**

- » manufactured from stainless steel material no. 1.4301
- » for transporting and storing sausages and smoking sticks
- » with 4 racks for storing smoking sticks of approx. 750 mm and over
- » with 4 pushing handles
- » mobile with 6 wheels D=125 mm made of polyamide fibre with breakdown torque



1

Fig.	Item no.	Dimensions in mm (WxDxH)
1	3292200	710x850x1900

### Lifting and loading trolleys

- » manufactured from stainless steel material no. 1.4301
- » 2B finish, smoothly ground welded joints
- » continuous beaded edging, tightly welded, with solid material embedded in the corners for stability
- » available with and without lifting fittings (runners)
- » with pushing handle
- » material thickness 2 mm, floor plate reinforced to 5 mm
- » with 4 wheels with breakdown torque
- » Available with additional drainage edge on request (conforms to FDA)
- » Also available in perforated design. Please enter the following information for this:
  - » hole diameter, where the perforation is needed, distance between holes middle-middle



Fig.	Item no.		External dimensions in mm (WxDxH)	Volume
	with runners	without runners		
	3320100	332010K	584x584x608	120 litres
<b>1</b>	3320200	332020K	680x730x700	200 litres
	3320300	332030K	680x730x950	300 litres

Accessories for lifting and loading trolleys



1



2



3

Fig.	Item no.	Fits model	Function
	3320100-D	120 litres	Stainless steel cover material no. 1.4301 with plastic handle
1	3320200-D	200 litres / 300 litres	Stainless steel cover material no. 1.4301 with plastic handle
2	3320200 ergonomic handle	For loading truck 120, 200 and 300 litres	Additional stainless steel handle enabling an ergonomic grip when pushing and pulling the loading truck. Is simply pushed and stopped using the handle
3	3320400	120, 200 and 300 litres	Cleaning device made of stainless steel material number 1.4301 for loading truck, with 2 fixed castors. The loading truck is hooked onto the runners and can then be tipped backwards over fixed castors on the cleaning device.

#### Bowl trough

- » manufactured from stainless steel material no. 1.4301
- » matt ground finish, grain 240
- » trough body deep drawn and smooth, no drain
- » strengthening plates are welded to the legs to prevent them pressing into the body of the trough
- » with stable pushing handle
- » mobile with 2 fixed castors made of polypropylene D=125 mm
- » supporting leg with plastic levelling foot



Fig.	Item no.	Outer diameter in mm	Trough depth in mm	Total height in mm
<b>1</b>	3420200	700	350	800
	3420200-015	700	350	1000



### Mixing troughs

- » manufactured from stainless steel material no. 1.4301
- » matt ground finish, grain 240
- » with continuous closed beaded edging
- » "Stationary" design with 2 fixed castors made of polypropylene D=125 mm
- » "Mobile" design with 2 fixed castors and 2 swivel castors made of polypropylene D=125 mm, 1x with stop
- » strengthening plates are welded to the legs to prevent them pressing into the body of the trough
- » with stable pushing handle
- » including drain with closing nozzle 1 ¼" and seal (apart from item no. 3470075)
- » mixing troughs with straight and round head ends can be adjusted in length to change the capacity; troughs with straight head ends can also be adjusted in depth.



1



2



3



4

Fig.	Item no.		Dimensions in mm without handle (WxDxH)	Head end designs	Volume
	Stationary	Mobile			
	3470075		590x700x835	straight	75 litres
1	3470100	2 3470101	1110x650x825	straight	150 litres
	3470200	3470201	1480x650x825	straight	200 litres
	3470300	3470301	1630x650x825	straight	300 litres
3	3480100	4 3480101	1200x700x850	round	150 litres
	3480200	3480201	1500x700x850	round	200 litres
	3480300	3480301	2100x700x850	round	300 litres

### Slaughterhouse trolley

- » manufactured from stainless steel material no. 1.4301
- » matt ground finish, grain 240
- » for transporting slaughter by-products and innards
- » containing: upper trough with edge reinforcement lower frame with 2 rubber coated fixed castors D=400 mm and 2 swivel castors D=250 mm
- » with 1 pushing handle
- » load capacity: 400 kg



**1**

Fig.	Item no.	Dimensions in mm (WxDxH)
<b>1</b>	3940100 (trough)	840x1440x200 (upper) 680x1280x200 (lower)
<b>1</b>	3251100 (lower frame)	840x1500x600 (height without trough)

### Tripe trolley

- » manufactured from stainless steel material no. 1.4301
- » Matt ground finish, grain 240
- » for transporting tripe and other innards
- » containing upper trough with edge reinforcement, lower frame with 2 rubber coated fixed castors D=400 mm, with 2 pushing handles
- » max. load capacity 400 kg



**1**

Fig.	Item no.	Dimensions in mm (WxDxH)
<b>1</b>	3930100 (trough)	750x1200x200 (upper) 590x1040x200 (lower)
<b>1</b>	3241100 (lower frame)	630x1570x650 (height without trough)

**Meat transport trolley**

- » manufactured from stainless steel material no. 1.4301
- » for carrying meat and sausage products
- » with removable blood collection tray
- » four rows of hooks with a total of 46 hooks
- » load capacity 1000 kg when load is spread evenly
- » mobile with 2 swivel and 2 fixed castors with galvanised wheel housing,
- » without stop, D=200 mm



1

Fig.	Item no.	Dimensions in mm (WxDxH)
1	3350200	700x1600x1805

### Cooling basin

- » manufactured from stainless steel material no. 1.4301
- » 2B finish, smoothly ground welded joints
- » with continuous closed beaded edging
- » see the table for design



Fig.	Item no.	Dimensions in mm WxDxH (external / internal)	Capacity in litres	Model
	3720200	700x850x780 (external) 650x800x600 (internal)	300	Mobile with 2 swivel and 2 fixed castors made of polypropylene, without stop, D=125 mm with galvanised wheel housing, with tube overflow valve 1 1/4"
	3720300	690x990x680 (external) 640x940x490 (internal)	300	mobile with 4 wheels made of polyamide fibre, D=150 mm, with breakdown torque, with tube overflow valve 2"
1	3720400	700x1050x780 (external) 650x1000x600 (internal)	400	Mobile with 2 swivel and 2 fixed castors made of polypropylene, without stop, D=125 mm with galvanised wheel housing, with tube overflow valve 1 1/4"
2	3720500	840x1040x680 (external) 790x990x490 (internal)	400	Mobile with 4 wheels made of polyamide fibre, D=150 mm, with breakdown torque, with tube overflow valve 2"
3	3720600	690x990x680 (external) 640x940x490 (internal)	300	Mobile with 4 wheels made of polyamide fibre, D=150 mm, with breakdown torque, drain with screw plug DN 50
4	3720700	840x1040x680 (external) 790x990x490 (internal)	400	Mobile with 4 wheels made of polyamide fibre, D=150 mm, with breakdown torque, drain with screw plug DN 50

**Stackable container**

- » manufactured from stainless steel material no. 1.4301
- » 2B finish, smoothly ground welded joints
- » with continuous tightly welded beaded edging
- » wall thickness 2.5 mm with support beams
- » with stackable legs
- » with drainage valve 1 ¼"



1

Fig.	Item no.	Dimensions in mm WxDxH (internal / external)	Capacity in litres
	3870100	690x1090x640 (internal) 756x1156x795 (external)	450
1	3870200	960x1190x705 (internal) 1026x1256x860 (external)	825
	3870600	790x1190x662 (internal) 856x1256x820 (external)	600

### Mobile trough trolley

- » manufactured from stainless steel material no. 1.4301
- » cylindrical ground finish
- » with stable pushing handle
- » with 2 fixed and 2 swivel castors (without stop), D=125 mm, rubber coated with galvanised wheel housing
- » right size for two adjacent Euro boxes



**Fig.**    **Item no.**    **Dimensions in mm WxHxD**  
**(internal / external)**

<b>1</b>	3110200	700x920x250 (internal) 790x1110x850 (external)
----------	---------	---

### Flat transport trolley

- » manufactured from stainless steel material no. 1.4301
- » matt ground finish, grain 240
- » with 2 fixed and 2 swivel castors (without stop), D=125 mm, rubber coated with galvanised wheel housing
- » load capacity 300 kg
- » see the table for design



Fig.	Item no.	Dimensions in mm (WxDxH)	Dimensions of storage space in mm (WxD)	Model
<b>1</b>	3150200	660x1000x850	605x847	Loading surface with continuous beaded edging, material thickness 2.0 mm
	3150300	650x1000x850	645x875	Loading surface with continuous upstand 50mm, material thickness 2.0 mm
	3150600	450x785x850	400x605	Loading surface with continuous beaded edging, material thickness 1.5 mm with foldable pushing handle

**Sack truck**

- » manufactured from stainless steel material no. 1.4301
- » matt ground finish, grain 240
- » with 2 pushing handles
- » Mobile with 2 rubber coated, air-filled wheels, D=250 mm
- » Load capacity: 150 kg



Fig.	Item no.	Dimensions in mm WxH	Scoop size in mm WxD
<b>1</b>	3270104	540x1260	300x260

### Transport roller

- » manufactured from stainless steel material no. 1.4301
- » 2B finish, smoothly ground welded joints
- » mobile with 6 wheels, D=125 mm on overturning moment
- » non tared (tared design can be delivered)
- » stacking troughs for middle set of wheels for easy and safe vertical stacking of rollers
- » inserted bolts to prevent the roller from tilting
- » load capacity 200 kg
- » see table for model and weight



**1**



**2**



**3**

Fig.	Item no.	Dimensions in mm (WxD)	Model	Weight	Tyres
<b>1</b>	3270100	410x655	Continuous rack support frame, with underrun protection the right size for 1 Euro box	approx. 6 kg (non tared)	Plastic
	3271100	410x655	Continuous rack support frame with underrun protection the right size for 1 Euro box	approx. 6 kg (non tared)	rubber
<b>2</b>	3280100	610x870	Continuous rack support frame, underrun protection the right size for 2 Euro boxes	approx. 6 kg (non tared)	Plastic
	3281100	610x870	Continuous rack support frame, underrun protection the right size for 2 Euro boxes	approx. 6 kg (non tared)	rubber
<b>3</b>	3270300	410x655	easier wheeling with support brackets on the front sides, correct size for 1 Euro box	approx. 5 kg (non tared)	Plastic



**Transport roller with pushing handle**

- » manufactured from stainless steel material no. 1.4301
- » 2B finish, smoothly ground welded joints
- » with 6 wheels, D=125 mm on overturning moment
- » with stable handle made from cylindrical tubing
- » correct size for Euro boxes (400x600 mm)
- » load capacity: 200 kg



**1**

Fig.	Item no.	Dimensions in mm WxDxH	Tyres
<b>1</b>	3270102	410x815x850	plastic
	3270102-GUM	410x815x850	rubber

### Roller transport trolley

- » manufactured from stainless steel material no. 1.4301
- » 2B finish, smoothly ground welded joints
- » with 6 wheels, D=125 mm on overturning moment
- » for storing and transporting up to 8 Brökelmann transport rollers



1

Fig.	Item no.	Dimensions in mm WxDxH
1	3270105	405x655x1375

### Pulling handle for transport rollers

- » manufactured from stainless steel material no. 1.4301
- » made from cylindrical tubing D=25 mm
- » with 2 rubber runners
- » for pushing and pulling Brökelmann transport rollers
- » can be slid under the transport rollers and hung up



1

Fig.	Item no.	Dimensions in mm
1	3270100-ZD	300x800

### Shopping trolley / stacking trolley

- » manufactured from stainless steel material no. 1.4301
- » matt ground finish, grain 240
- » with pushing handle
- » mobile with 4 swivel castors (without stop), D=125, rubber coated
- » can be pushed together using trough shutter



1

Fig.	Item no.	Dimensions in mm WxDxH
1	3150800	620x1030x1020

### Multi-purpose trolley

- » manufactured from stainless steel material no. 1.4301
- » cylindrical ground finish
- » with pushing handle
- » with 2 fixed and 2 swivel castors (without stop), D=125 mm, rubber coated with galvanised wheel housing



1

Fig.	Item no.	Dimensions in mm WxDxH (internal / external)
1	3120300	600x970/870x400 (internal) 606x1150x860 (external)

### Euro standard universal transport trolley

- » manufactured from stainless steel material no. 1.4301
- » matt ground finish, grain 240
- » framework made of profile pipe 25x25x1.5 mm
- » with 2 fixed and 2 swivel castors (with stop), D=100 mm, rubber coated with galvanised wheel housing (projection on all sides 30mm)
- » with 2 pushing handles
- » with 6 levels (lowest level welded + 5 pairs of hang-on rails)
- » correct size for Euro standard boxes E1, E2 and E3
- » loading capacity max. 240 kg
- » additional hang-on rails available (item no 3350300-LI + 3350300-RE)



1

Fig.	Item no.	Dimensions in mm WxDxH	Model
1	3350300	465x610x1630	with 6 levels (incl. 5 pairs of hang-on rails)

**Euro standard transport trolley**

- » manufactured from stainless steel material no. 1.4301
- » matt ground finish, grain 240
- » framework made of profile tubing 25x25x1.5 mm
- » with 6 wheels, D=125 mm on overturning moment
- » with 2 pushing handles
- » loading capacity max. 300 kg
- » see the table for models



Fig.	Item no.	Dimensions in mm WxDxH	Model
<b>1</b>	3350400	460x620x1340	Correct size for 4xE2-boxes
	3350500	460x620x1340	Correct size for 3xE3-boxes
	3350600	460x620x1950	Correct size for 7xE2-boxes

#### Clearing trolley / gastronorm trolley

- » manufactured from stainless steel material no. 1.4301
- » matt ground finish, grain 240
- » Framework made of bent profile tubing 25x25x1.5 mm
- » 4 swivel castors (1xwith stop), D=100 mm, with rubber tyres and galvanised wheel housing
- » with bumpers (projection on all sides approx. 40 mm)
- » Width of rack profile 20 mm with latch on one side
- » loading capacity max. 240 kg



1



2



3



4



5



6



7

Fig.	Item no.	Dimensions in mm WxDxH	Number of levels	Distance between levels in mm	Correct size for max. tray size of WxD in mm /GN	Item no. Storage tray
	3370200	360x620x1260	10	102	300x620	33702EW
1	3370300	360x620x1360	8	145	300x620	33702EW
	3370400	360x620x1650	10	145	300x620	33702EW
2	3370500	430x610x1350	5	225	370x610	33705EW
3	3380500	580x650x1350	5	225	520x650	33805EW
4	3390500	540x620x1300	5	220	480x620	33905EW
5	3390800	650x470x1460	6	210	590x470	33908EW
	3390900	810x595x1460	6	210	750x595	33909EW
6	3380600	385x570x1550	18	73	325x570/ GN 1/1	-
	3380700	590x690x1550	18	73	530x690/ GN 1/1 or GN 2/1	-
7	3380800	745x570x1550	2x18	73	325x570/ GN 1/1	-
	3380900	1155x690x1550	2x18	73	530x690/ GN 1/1 or GN 2/1	-

The cooking kettles and additional cooking kettles from Brökelmann were specially developed for use in butcher's shops, fast food outlets and commercial kitchens. Today they are also widely used in the catering sector, for outdoor catering on market stalls, and in home slaughtering.

They are particularly well suited to the preparation of small quantities of cooked food and as additional cooking kettles alongside existing catering equipment. With cooking kettles that are heated indirectly using glycerin, the uniform distribution of heat ensures that the food does not burn or stick.

The additional cooking kettles are ideal for cooking sausages, for rendering down fat or for preparing soups, stews and many other dishes. We can also provide accessories such as floating sieves, bottom sieves and basket inserts.



	Additional cooking kettle, round indirectly heated						Additional cooking kettle, angular, indirectly heated				Cooking kettles				
	6080100	6080100-FB	6080200	6080200-FB	6080300	6080300-FB	6080500	6080600	60806-KA10	6080700	6080800	6080800-FB	6080900-003	6080900-003-FB	6080900
Kettle capacity in litres	90	90	120	120	150	150	120	150	150	200	300	300	300	300	400
Internal shape of kettle	●	●	●	●	●	●	●	●	●	●	■	■	■	■	■
Method of heating	→	→	→	→	→	→	→	→	→	→	→	→	→	→	→
Glycerin filling in kg	32	32	38	38	44	44	38	38	44	44			60	60	
Thermostatic control	✓	✓	✓	✓	✓	✓	✓	✓							
Microprocessor control system									✓	✓	✓	✓	✓	✓	✓
Connected load 380/400 V	✓	✓	✓	✓	✓	✓	✓	✓	✓	✓	✓	✓	✓	✓	✓
Heating power in kW	6	6	9	9	9	9	9	9	9	12	17	17	27	27	21
Permanent connection											✓		✓		✓
CEE connector 16/32 A	16	16	16	16	16	16	16	16	16	32		32		64	
Separate switching box											✓		✓	✓	✓
Integrated switching box												✓			
External dimensions W (overall)	770	770	820	820	920	920	700	700	700	850	1115	1495	1115	1495	1365
External dimensions D (overall)	800	800	850	850	850	850	840	840	840	1020	1200	1200	1178	1178	1200
Working height in mm	860	860	860	860	860	860	920	920	920	920	955	955	1020	1020	955
Internal dimensions Width in mm											900	900	900	900	1150
Internal dimensions Depth in mm											800	800	800	800	800
Internal dimensions Height in mm	530	530	530	530	530	530	530	530	530	530	450	450	450	450	450
Internal dimensions Diameter in mm	480	480	540	540	600	600	540	600	600	700					
Drain tap	1 1/4"	1 1/4"	1 1/4"	1 1/4"	1 1/4"	1 1/4"	1 1/4"	1 1/4"	1 1/4"	1 1/2"	1 1/2"	1 1/2"	1 1/2"	1 1/2"	1 1/2"
Stationary	✓		✓		✓						✓		✓		✓
Mobile		✓		✓		✓	✓	✓	✓	✓		✓		✓	
Heating time 20° - 90° in min.	97	97	95	95	120	120	90	115	115	100	95	95	110	110	105
Water inlet							○	○	○	○	○	○	○	○	○
Core temperature sensor									○	○	○	○	○	○	○
Signal horn									○	○	○	○	○	○	○



**Cooking kettle, 300/400 litre, angular, directly heated**

- » manufactured from stainless steel material no. 1.4301
- » matt ground finish, grain 240
- » direct electrical heating
- » double-walled lid, opens to 90°
- » angular kettle interior
- » safety vent valve 1 1/2"
- » 2 power settings
- » digital temperature control
- » input desired value using 2 buttons
- » pre-set start timer and cooking timer
- » heats up intermittently from 3° below the input temperature to ensure greatest accuracy of desired value
- » in the stationary model the controls are in a separate switching box, to be fixed to the wall during installation
- » in the mobile model the digital controls are on a supporting arm mounted on the side
- » the mobile model has 2 fixed and 2 swivel castors, 2x with stop
- » fully wired with 32 A CEE standard connector



Fig.	Item no.	Capacity	Dimensions in mm WxD	Working height in mm	Internal dimensions in mm WxDxH	Power in kW	Connection
1	6080800	300 litres	1115x1200	955	900x800x450	17 (11.2/17.0)	400 V
2	6080800-FB	300 litres	1495x1200	955	900x800x450	17 (11.2/17.0)	400 V
	6080900	400 litres	1365x1200	955	1150x800x450	21 (2x10.5)	400 V

### Cooking kettle, angular, indirectly heated (with glycerin filling)

#### Angular kettle interior

- » manufactured from stainless steel material no. 1.4301
- » double-walled with glycerin filling
- » angular kettle interior
- » safety vent valve 1 1/2"
- » digital temperature control
- » the controls are in a separate switching box, to be fixed to the wall during installation
- » input desired value using 2 buttons
- » pre-set start timer and cooking timer
- » heats up intermittently from 3° below the input temperature to ensure greatest accuracy of desired value
- » in the mobile model the digital controls are on a supporting arm mounted on the side
- » the mobile model has 4 swivel castors, 2x with stop
- » fully wired with 32 A CEE standard connector



1

Fig.	Item no.	Capacity	Dimensions in mm WxD	Working height in mm	Internal dimensions in mm WxDxH	Capacity Glycerin in kg	Power in kW	Connection
1	6080900-003	300 litres	1115x1178	1020	900x800x450	95	27/3x9	400 V
	6080900-003-FB	300 litres	1115x1178	1020	900x800x450	95	27/3x9	400 V

**Additional cooking kettle, angular, indirectly heated (with glycerin filling)  
round kettle interior - with thermostatic control**

- » manufactured from stainless steel material no. 1.4301
- » double-walled with glycerin filling
- » round kettle interior
- » safety vent valve 1 1/4"
- » mobile, with 2 fixed and 2 swivel castors, 2x with stop
- » thermostatic temperature control
- » for accurate monitoring of the temperature of the cooking food, a commercially available floating thermometer is required
- » fully wired with 16 A



1

Fig.	Item no.	Capacity	External dimensions in mm WxD	Internal dimensions (diameter/height) in mm	Working height in mm	Capacity Glycerin in kg	Power in kW	Connection
1	6080500	120 litres	700x700	D=540 / H=530	920	38	9	400 V
	6080600	150 litres	700x700	D=600 / H=530	920	44	9	400 V

### Additional cooking kettle, angular, indirectly heated (with glycerin filling) round kettle interior - with digital controls

- » manufactured from stainless steel material no. 1.4301
- » double-walled with glycerin filling
- » round kettle interior
- » large safety vent valve, see table
- » mobile, with 2 fixed and 2 swivel castors, 2xwith stop
- » digital temperature control, mounted on a support arm
- » input desired value using 2 buttons
- » pre-set start timer and cooking timer
- » heats up intermittently from 3° below the input temperature to ensure greatest accuracy of desired value
- » fully wired with 16 A / 32 A connector (6080700)



**1**



**2**

Fig.	Item no.	Capacity	External dimensions in mm WxD	Internal dimensions (diameter/height) in mm	Working height in mm	Safety vent valve	Capacity Glycerin in kg	Power in kW	Connection
<b>1</b>	60806-KA10	150 litres	700x700	D=600 / H=530	920	1 ¼"	44	9	400 V
<b>2</b>	6080700	200 litres	850x900	D=700 / H=530	920	1 ½"	63	12	400 V

**Additional cooking kettle, round, indirectly heated (with glycerin filling)**

- » manufactured from stainless steel material no. 1.4301
- » cylindrical ground finish
- » double-walled with glycerin filling
- » safety vent valve 1 1/4"
- » housing not thermally insulated
- » thermostatic temperature control
- » for accurate monitoring of the temperature of the cooking food, a commercially available floating thermometer is required
- » mobile, with 3 swivel castors, 1x with stop
- » fully wired with 16 A CEE standard connector



Fig.	Item no.	Capacity	Dimensions (diameter) in mm	Internal dimensions (diameter/height) in mm	Working height in mm	Capacity Glycerin in kg	Power in kW	Connection
	6080100	90 litres	D = 540	D=480 / H=530	860	42	6	400 V
	6080100-FB	90 litres	D = 540	D=480 / H=530	860	42	6	400 V
<b>1</b>	6080200	120 litres	D = 600	D=540 / H=530	860	50	9	400 V
<b>2</b>	6080200-FB	120 litres	D = 600	D=540 / H=530	860	50	9	400 V
	6080300	150 litres	D = 660	D=600 / H=530	860	60	9	400 V
	6080300-FB	150 litres	D = 660	D=600 / H=530	860	60	9	400 V

### Mini cooker

- » manufactured from stainless steel material no. 1.4301
- » electrically heated
- » hotplate D=400 mm
- » 3 power levels
- » fully wired with 16 A CEE standard connector



Fig.	Item no.	Dimensions in mm WxDxH	Connection
<b>1</b>	6061100	470x470x590	5KW / 400 V

**Floating sieves (SS) and bottom sieves (BS) for cooking kettles**

- » floating sieves manufactured from aluminium AlMgSi 0.5
- » bottom sieves manufactured from stainless steel material no. 1.4301



1



2

For kettle capacity	For item no.	Item no.		Dimensions in mm
		Bottom sieves	Floating sieves	
90 litres	6080100	60801BS	60801SS	D=460
120 litres	6080200/6080500	60802BS	60802SS	D=510
150 litres	6080300/6080600	60803BS	60803SS	D=580
200 litres	6080700	60807BS	60807SS	D=680
300 litres	6080800/-FB 6080900-003/-FB	60808BS	60808SS	880x780
400 litres	6080900	60809BS	60809SS	1130x750

### Basket inserts for round kettle interiors

- » manufactured from stainless steel material no. 1.4301
- » available in one-piece (K1) and two-piece (K2) models
- » with carrying handles



1

For kettle capacity	For item no.	Item no.		Dimensions in mm
		one-piece	two-piece	
90 litres	6080100	60801K1	60801K2	D=460
120 litres	6080200/ 6080500	60802K1	60802K2	D=520
150 litres	6080300/ 6080600	60803K1	60803K2	D=580
200 litres	6080700	60807K1	60807K2	D=680



**Manual ham press – 50 kg**

- » manufactured from stainless steel material no. 1.4301
- » matt ground finish, grain 240
- » pressure generated manually using spindles
- » mobile, with 2 fixed and 2 swivel castors, (1x stop) D=100 mm



Fig.	Item no.	External dimensions in mm WxDxH	Internal dimensions in mm WxDxH	Basic equipment (included with delivery)	Suitable for amount of meat in kg
<b>1</b>	6815000	662x372x720	600x310x500	6x plastic plates 590x300x15 mm (item no. 5575200)  20x stainless steel angles with adjustable arms to match the pieces of meat (item no. 6820100)	50

### Pneumatic ham presses

- » manufactured from stainless steel material no. 1.4301
- » pressure generated pneumatically using pneumatic cylinders
- » Pressure controller included - 3.0 bar
- » mobile with 6 fixed castors made of polyamide D= 150 mm on overturning moment (no stop)



Fig.	Item no.	External dimensions in mm WxDxH	Internal dimensions in mm WxDxH	Basic equipment (included in delivery)	Suitable for amount of meat in kg
1	6811000	1080x490x890	875x405x455	6x plastic plates 870x400x15 mm (item no. 5575300)	100 kg
				1x plastic plate 870x400x30 mm (item no. 5575500)	
				30x stainless steel angles with adjustable arms to match the pieces of meat (item no. 6820200)	
	6812000	1080x490x1170	875x405x730	8x plastic plates 870x400x15 mm (item no. 5575300)	200 kg
				1x plastic plate 870x400x30 mm (item no. 5575500)	
				40x stainless steel angles with adjustable arms to match the pieces of meat (item no. 6820200)	
	68123000	1635x560x1775	1400x405x1220	14x plastic plates 1395x400x15 mm (item no. 5575600)	500 kg
				1x plastic plate 1395x400x30 mm (item no. 5575500)	
				90x stainless steel angles with adjustable arms to match the pieces of meat (item no. 6820200)	

**Cooking mould with smooth inner surface**

- » manufactured from stainless steel material no. 1.4301
- » cylindrical mould with straight ends
- » smooth inner surface
- » cover with compression arm and toothed rack

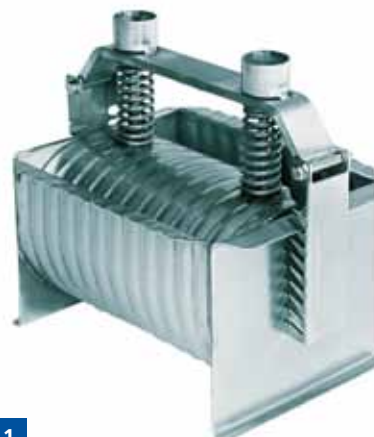


1

Fig.	Item no.	Internal length in mm	Diameter in mm	Capacity in kg
1	2480500	220	150	3-4
	2480600	220	160	4-5
	2480700	250	170	5-6

**Cooking mould with grooved inner surface**

- » manufactured from stainless steel material no. 1.4301
- » cylindrical mould with straight ends
- » grooved inner surface
- » cover with compression arm and toothed rack



1

Fig.	Item no.	Internal length in mm	Diameter in mm	Capacity in kg
1	2490500	220	150	3-4
	2490600	220	160	4-5
	2490700	250	170	5-6

### Ham press trolleys

- » manufactured from stainless steel material no. 1.4301
- » designed according to customer requirements
- » 7 fixed and 7 movable shelves
- » with press mechanism
- » mobile with 4 fixed castors with stainless steel wheel housing D=200 mm, no stop



1

Fig.	Item no.	Dimensions in mm WxDxH
1	9917-001A	840x1000x1830 / 1920

### Ham press trolleys with integrated moulds

- » manufactured from stainless steel material no. 1.4301
- » designed according to customer requirements
- » 8 fixed and 8 movable shelves
- » includes ham moulds according to customer specifications
- » with press mechanism
- » mobile, with 4 heavy-duty fixed castors, no stop



1



Fig.	Item no.	Dimensions in mm WxDxH
1	9917-001B	1200x700x2050

### Storage options and holders for tools and accessory parts

- » manufactured from stainless steel material no. 1.4301
- » for model see table



1



2



3



4

Fig.	Description	Item no.	Finish	Dimensions in mm WxDxH
1	Holder for knives and cleavers, wall-mounted	7360100	Cylindrical ground finish	400x80x260
2	Holder for nozzles and mincing discs	7360200	Matt ground finish, grain 240	590x105x275
3	Holder for knives, nozzles and mincing discs	7370100	Matt ground finish, grain 240	590x105x455
4	Knife holder	7390100	Matt ground finish, grain 240	500x50x300

### Bucket

- » manufactured from stainless steel material no. 1.4301
- » plain with all-round pouring rim and welded base



1

Fig.	Item no.	Capacity	Shape	Height
1	4610100	approx. 10 litres	conical	300 mm

## Perforated sausage ladles

- » bowl made from stainless steel
- » plastic handle
- » different dimensions available

## Weighing scoops

- » manufactured from aluminium AlMgSi 0.5



Item no.	Length in mm	Holding capacity
7311100	150	50 g
7311200	185	90 g
7311300	210	160 g
7311400	250	240 g
7311500	310	500 g
7311600	350	1000 g
7311700	430	2500 g

### Other aluminium accessories

- » manufactured from aluminium AlMgSi 0.5



1

Description	Item no.
String dispenser holding 200 g of string, with stainless steel hanging hook	7271100

### Holders for bread rolls, doner kebabs and bags of chips

- » manufactured from stainless steel material no. 1.4301
- » matt ground finish, grain 240
- » with slip-proof plastic feet



1



2



3

Fig.	Model	Item no.	Dimensions in mm WxDxH
1	Holder for 3 bread rolls	3472900	310x110x55
2	Holder for 3 doner kebabs	3472600	307x100x117
3	Ring holder for 2 cones of chips D = 80 mm, spacing 100 mm	3472500	100x150x160

### Foil dispenser

- » manufactured from stainless steel material no. 1.4301
- » matt ground finish, grain 240
- » robust stainless steel tearing edge
- » for model see table



1



2

Item no.		Model	Dimensions in mm WxDxH	Length of roll
For 1 roll	For 2 rolls			
<b>1</b> 5370400	5370400-2	freestanding	340x160x80 / 340x240x80	300 mm
5370500	5370500-2	freestanding	490x160x80 / 490x240x80	450 mm
5370600	5370600-2	freestanding	640x160x80 / 640x240x80	600 mm
-	<b>2</b> 5370700	wall mounted	340x240x80	300 mm
-	5370800	wall mounted	490x240x80	450 mm
-	5370900	wall mounted	640x240x80	600 mm



### Aluminium flat pallets with horizontal bars

- » manufactured from aluminium material number AlMgSi 0.5
- » design with horizontal bars
- » frame and bars consist of double chamber profiles 80x30 mm or 100x20 mm
- » available with legs or skids (suitable for transport on conveyor belts)
- » load capacity 1000 kg
- » optionally available with confinement profile see image 3 (item number contains extra letter „B“)



1



2



3

Item no.		Dimensions in mm WxDxH	Dimensions of horizontal bars in mm WxDxH	Number of bars	Distance between bars in mm
With skids	With legs				
<b>1</b> 772885QK	772885QF	1200x800x150	80x30	5	107
772886QK	772886QF	1200x800x150	80x30	6	80
772887QK	772887QF	1200x800x150	80x30	7	60
772888QK	772888QF	1200x800x150	80x30	8	44
772815QK	772815QF	1200x1000x150	80x30	5	107
772816QK	772816QF	1200x1000x150	80x30	6	80
772817QK	772817QF	1200x1000x150	80x30	7	60
772818QK	772818QF	1200x1000x150	80x30	8	44
772185QK	<b>2</b> 772185QF	1200x800x150	100x20	5	83
772186QK	772186QF	1200x800x150	100x20	6	57
772187QK	772187QF	1200x800x150	100x20	7	37
772115QK	772115QF	1200x1000x150	100x20	5	83
772116QK	772116QF	1200x1000x150	100x20	6	57
772117QK	772117QF	1200x1000x150	100x20	7	37

## Aluminium flat pallets with longitudinal bars

- » manufactured from aluminium material number AlMgSi 0.5
- » design with horizontal bars
- » frame and bars consist of double chamber profiles 80x30 mm or 100x20 mm
- » available with legs or skids (suitable for transport on conveyor belts)
- » load capacity 1000 kg
- » optionally available with confinement profile see image 3 (item number contains extra letter „B“)



1



2



3

Item no.		Dimensions in mm WxDxH	Dimensions of longitudinal bars in mm WxDxH	Number of bars	Distance between bars in mm
With skids	With legs				
<b>1</b> 772883LK	772883LF	1200x800x150	80x30	3	100
772884LK	772884LF	1200x800x150	80x30	4	64
772885LK	772885LF	1200x800x150	80x30	5	40
772813LK	772813LF	1200x1000x150	80x30	3	150
772814LK	772814LF	1200x1000x150	80x30	4	104
772815LK	772815LF	1200x1000x150	80x30	5	73
772816LK	772816LF	1200x1000x150	80x30	6	51
772183LK	<b>2</b> 772183LF	1200x800x150	100x20	3	75
772184LK	772184LF	1200x800x150	100x20	4	40
772113LK	772113LF	1200x1000x150	100x20	3	125
772114LK	772114LF	1200x1000x150	100x20	4	80
772115LK	772115LF	1200x1000x150	100x20	5	50

**Aluminium stacking frames for flat pallets**

- » manufactured from aluminium, see table for material number
- » see table for model
- » suitable for pallets of Euro size 1200x800



Fig.	Item no.	Model	Dimensions in mm WxDxH
1	772AR-001	aluminium frame Al 99.5 hh sheet d=2 mm can be completely dismantled due to plug-in design	1205x805x500
2	772AR-002	frame made from profile tubing ALMg3 50x27 with attached sheet inserts can be completely dismantled due to plug-in hinges	1210x810x518
3	772AR-003	box frame made of profile tubing, ALMgSi 0.5 can be completely dismantled due to plug-in hinges	1210x810x550

## Aluminium box pallets

- » manufactured from aluminium material number AlMgSi 0.5
- » available with 4 corner legs or 2 longitudinal skids
- » with stacking corners
- » with 4 longitudinal bars made of profile tubing 80x30 mm
- » distance between bars 67 mm
- » box frame made of profile tubing (horizontal) and 30x30 mm (vertical) with support beams 30x20 mm
- » filling level 700 mm
- » see table for design
- » load capacity 1000 kg



1



2



3



4

Item no.		Dimensions in mm WxDxH (across stacking corners)	Model
With skids	With legs		
778824LKK0	778824LFK0	1230x830x880	fixed box frame
778824LKK1	<b>2</b> 778824LFK1	1230x830x880	fixed triangular box frame, one longitudinal side can be half-folded
778824LKK2	<b>3</b> 778824LFK2	1230x830x880	fixed triangular box frame, one longitudinal side can be removed from hinges
778824LKK4	<b>4</b> 778824LFK4	1230x830x880	box frame removable on all sides

**Aluminium box pallet, mobile**

- » manufactured from aluminium material number AlMgSi 0.5
- » mobile design with 2 fixed and 2 swivel castors, 1xwith stop
- » with 4 longitudinal bars made of profile tubing 80x30 mm
- » distance between bars 67 mm
- » fixed box frame made of profile tubing 50x30 mm (horizontal) and 30x30 mm (vertical) with support beams 30x20 mm
- » filling level 700 mm
- » load capacity 1000 kg



**1**

Fig.	Item no.	Dimensions in mm WxDxH
<b>1</b>	778824LRK0	1200x800x930

Aluminium safety box pallet, lockable

- » manufactured from aluminium material number AlMgSi 0.5
- » available with 4 corner legs or 2 longitudinal skids
- » lockable with padlock
- » with stacking corners
- » With 4 longitudinal bars made of profile tubing 60x30 mm
- » distance between bars 67 mm
- » fixed box frame made of profile tubing 50x30 mm (horizontal) and 30x30 mm (vertical) with support beams 30x20 mm
- » filling level 700 mm
- » load capacity 1000 kg



1

Item no.		Dimensions in mm WxDxH (across stacking corners)
With skids	With legs	
1 778824LKK5	778824LFK5	1230x830x880

**Stainless steel flat pallets with horizontal or longitudinal bars**

- » manufactured from stainless steel material no. 1.4301
- » frame and bars consist of profile tubing 60x30 mm
- » available with legs made of profile tubing 60x60x2.0 (without clearance limitations) or skids (suitable for transport on conveyor belts – no clearance limitations for front side)
- » load capacity 1000 kg
- » optionally available with confinement profile see image 3 (item number contains extra letter „B“)



Item no.		Dimensions in mm WxDxH	Bar design	Number of bars	Distance between bars in mm
With skids	With legs				
<b>1</b> 782885QK	<b>1</b> 782885QK	1200x800x150	horizontal bars	5	130
782886QK	782886QF	1200x800x150	horizontal bars	6	103
782887QK	782887QF	1200x800x150	horizontal bars	7	83
782888QK	782888QF	1200x800x150	horizontal bars	8	67
782815QK	782815QF	1200x1000x150	horizontal bars	5	130
782816QK	782816QF	1200x1000x150	horizontal bars	6	103
782817QK	782817QF	1200x1000x150	horizontal bars	7	83
782818QK	782818QF	1200x1000x150	horizontal bars	8	67
782884LK	782884LF	1200x800x150	longitudinal bars	4	88
<b>2</b> 782885LK	<b>2</b> 782885LF	1200x800x150	longitudinal bars	5	63
782886LK	782886LF	1200x800x150	longitudinal bars	6	46
782887LK	782887LF	1200x800x150	longitudinal bars	7	33
782814LK	782814LF	1200x1000x150	longitudinal bars	4	128
782815LK	782815LF	1200x1000x150	longitudinal bars	5	97
782816LK	782816LF	1200x1000x150	longitudinal bars	6	74
782817LK	782817LF	1200x1000x150	longitudinal bars	7	58

## Stainless steel box pallets

- » manufactured from stainless steel material no. 1.4301
- » available with 4 corner legs or 2 longitudinal skids
- » with stacking corners
- » with 4 longitudinal bars made of profile tubing 60x30 mm
- » distance between bars 63 mm
- » box frame made of profile tubing 50x30 mm (horizontal) and 30x30 mm (vertical) with support beams made of cylindrical tubing D = 20 mm
- » filling level 700 mm
- » see table for model
- » load capacity 1000 kg



1



2



3



4



5

Item no.		Dimensions in mm WxDxH (across stacking corners)	Model
With skids	With legs		
788625LKK0	<b>1</b> 788625LFK0	1230x830x880	fixed box frame
788625LKK1	788625LFK1	1230x830x880	fixed triangular box frame, one longitudinal side can be half-folded
788625LKK2	788625LFK2	1230x830x880	fixed triangular grid frame, one longitudinal side can be removed from hinges
788625LKK3	<b>4</b> 788625LFK3	1230x830x880	box frame can be folded in on all sides for space-saving storage
788625LKK4	<b>5</b> 788625LFK4	1230x830x880	box frame removable on all sides



**Stainless steel box pallet, mobile**

- » manufactured from stainless steel material no. 1.4301
- » mobile design with 2 fixed and 2 swivel castors, 1x with stop
- » with 4 longitudinal bars made of profile tubing 60x30 mm
- » distance between bars 63 mm
- » box frame made of profile tubing 50x30 mm (horizontal) and 30x30 mm (vertical) with support beams made of cylindrical tubing D=20 mm
- » filling level 700 mm
- » load capacity 1000 kg



1

Fig.	Item no.	Dimensions in mm WxDxH
1	788625LRK0	1200x800x930

Aluminium safety box pallet, lockable

- » manufactured from stainless steel material no. 1.4301
- » lockable with padlock
- » with stacking corners
- » available with 4 corner legs or 2 longitudinal skids
- » box frame with 4 longitudinal bars made of profile tubing 60x30 mm
- » distance between bars 63 mm
- » box frame made of profile tubing 50x30 mm (horizontal) and 30x30 mm (vertical) with support beams made of cylindrical tubing D=20 mm
- » filling level 700 mm
- » load capacity 1000 kg



1

Item no.		Dimensions in mm WxDxH (across stacking corners)
With skids	With legs	
<b>1</b> 788625LKK5	788625LFK5	1230x830x880

**Container**

- » manufactured from stainless steel material no. 1.4301
- » sheet thickness 2.5 mm
- » stackable design
- » with manhole cover and disc valve



1

Fig.	Item no.	Dimensions in mm WxDxH
1	7832HAY-005	1200x1200x1470

**Bulk material container**

- » manufactured from stainless steel material no. 1.4301
- » sheet thickness 2.5 mm
- » with stacking corners and entry runners for pallet trucks
- » with pushing mechanism



1

Fig.	Item no.	Dimensions in mm WxDxH
1	32329100	1265x1020x1290

### Tobacco container

- » manufactured from aluminium material number AlMgSi 0.5
- » sheet thickness 2.5 mm
- » stackable design
- » with multiplex runners



1

Fig.	Item no.	Dimensions in mm WxDxH
1	3870300	1200x1000x1700

### Containers for runners

- » manufactured from stainless steel material no. 1.4301
- » with 2 longitudinal runners made of profile tubing 60x30 mm
- » ground and side sheets made of 2mm sheet
- » load capacity 1000 kg



1

Fig.	Item no.	Dimensions in mm WxDxH
1	788625LKK6-004	1200x750x700

## Transport container for tools

- » manufactured from stainless steel material no. 1.4301
- » pallet with frame tubing construction and side walls made of metal sheet panels
- » integrated ramp
- » moisture-proof and dust-proof shutters
- » lockable with padlock
- » load capacity: 1000 kg



1

Fig.	Item no.	Dimensions in mm WxDxH
1	7832Z01	900x800x1100

## Transport box for tools

- » manufactured from aluminium AlMgSi 0.5
- » including pallet with frame tubing construction
- » with side walls made of metal sheeting
- » splash-proof cover and doors
- » lockable with padlock
- » load capacity approx. 500 kg



1

Fig.	Item no.	Dimensions in mm WxDxH
1	7832Z02	1200x800x1000

### Special containers for liquids

- » manufactured from stainless steel material no. 1.4301
- » with removable cover, with snap locks
- » storage capacity approx. 100 litres
- » cover with seal
- » with angled base for complete emptying
- » with a ball valve
- » with permanent airing and ventilation through the cover



Fig.	Item no.	Dimensions in mm WxDxH
1	32326001	D=480 H=1220

### Safety transport trolley

- » manufactured from stainless steel material no. 1.4301
- » with 5 pairs of insertion rails
- » for trays or containers 400x600 mm
- » triangular with fixed upper grid frame with wired grid d = 3mm
- » front grid frame door, lockable with padlock



Fig.	Item no.	Dimensions in mm WxDxH
1	66661017	465x650x1630

## Custom-made smoking trolley

Please state the requirements for your smoking trolley.



without illustration

☐ H-shaped smoking trolleys

☐ Z-shaped smoking trolleys

☐ Box-shaped smoking trolleys

Intended use (special features): \_\_\_\_\_

Temperature range up to \_\_\_\_\_ °C

Max. time frame in minutes \_\_\_\_\_

Maximum load capacity:

in total \_\_\_\_\_ kg / per level \_\_\_\_\_ kg

Maximum dimensions of smoking trolleys WxDxH:

\_\_\_\_\_ x \_\_\_\_\_ x \_\_\_\_\_ mm

Design of the levels (choose from the levels listed below): \_\_\_\_\_



1



2



3



4



5



6



7

Number of levels: \_\_\_\_\_

Distance between levels: \_\_\_\_\_ mm

Length of smoking sticks used: \_\_\_\_\_ mm

Dimensions of grating used WxDxH:

\_\_\_\_\_ x \_\_\_\_\_ x \_\_\_\_\_ mm

Other features: \_\_\_\_\_

\_\_\_\_\_

Load capacity of the grating: \_\_\_\_\_ kg

Number and position of handles: \_\_\_\_\_

Tara: \_\_\_\_\_

Miscellaneous: \_\_\_\_\_

Your contact details:

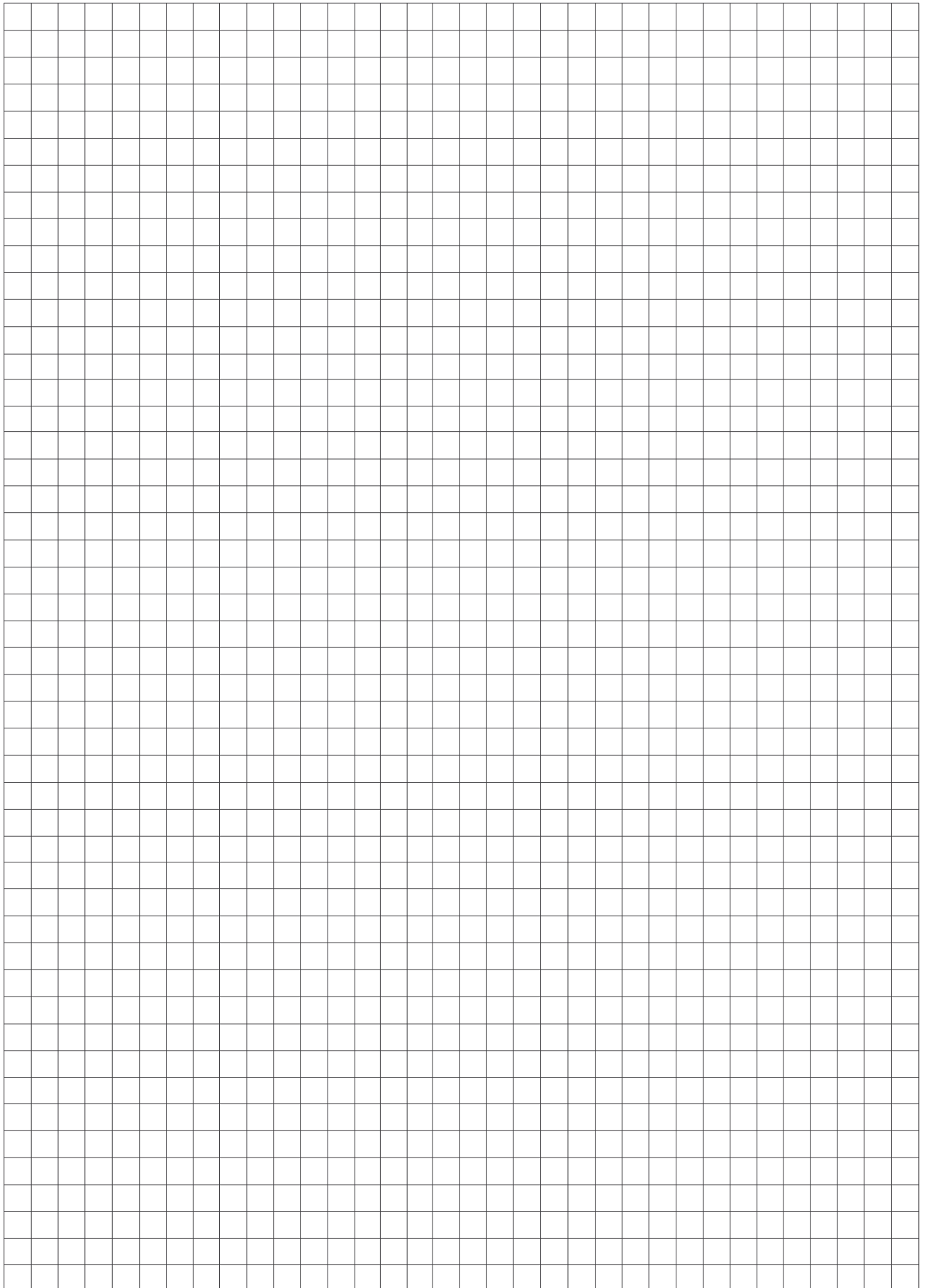
Company: \_\_\_\_\_ Contact name: \_\_\_\_\_

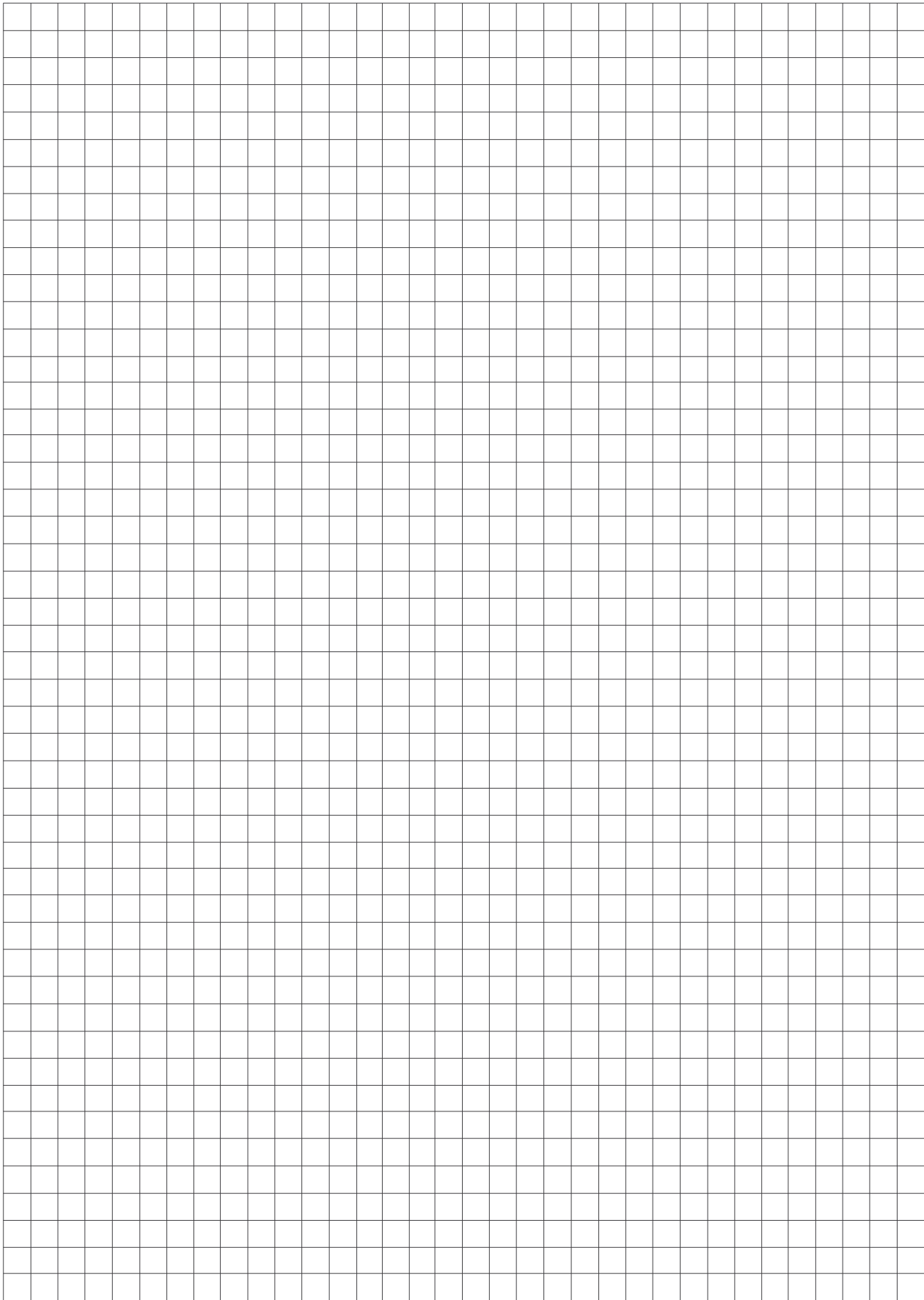
Telephone number: \_\_\_\_\_ Fax number: \_\_\_\_\_ Email address: \_\_\_\_\_

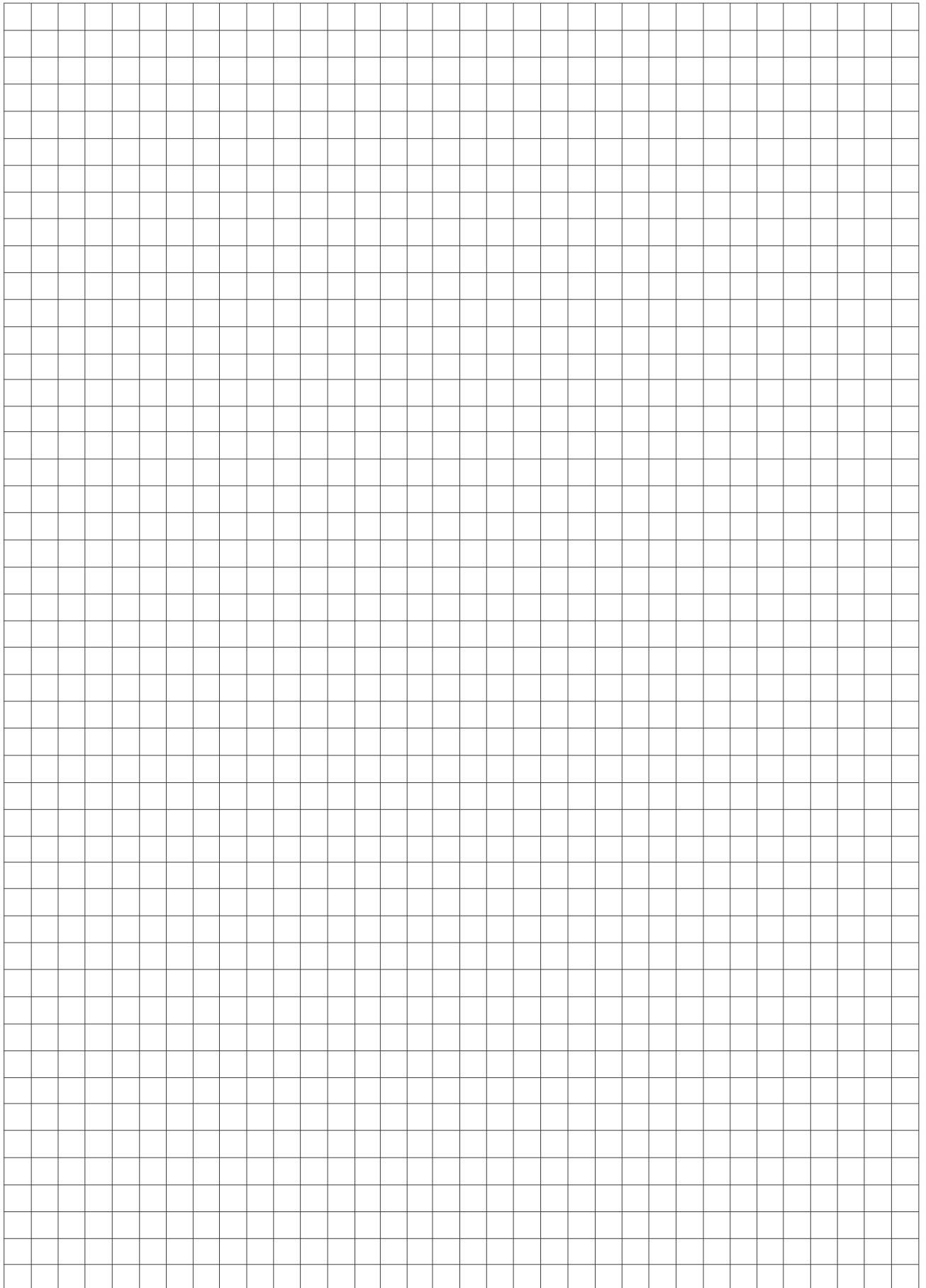
Post code/town: \_\_\_\_\_ Country: \_\_\_\_\_

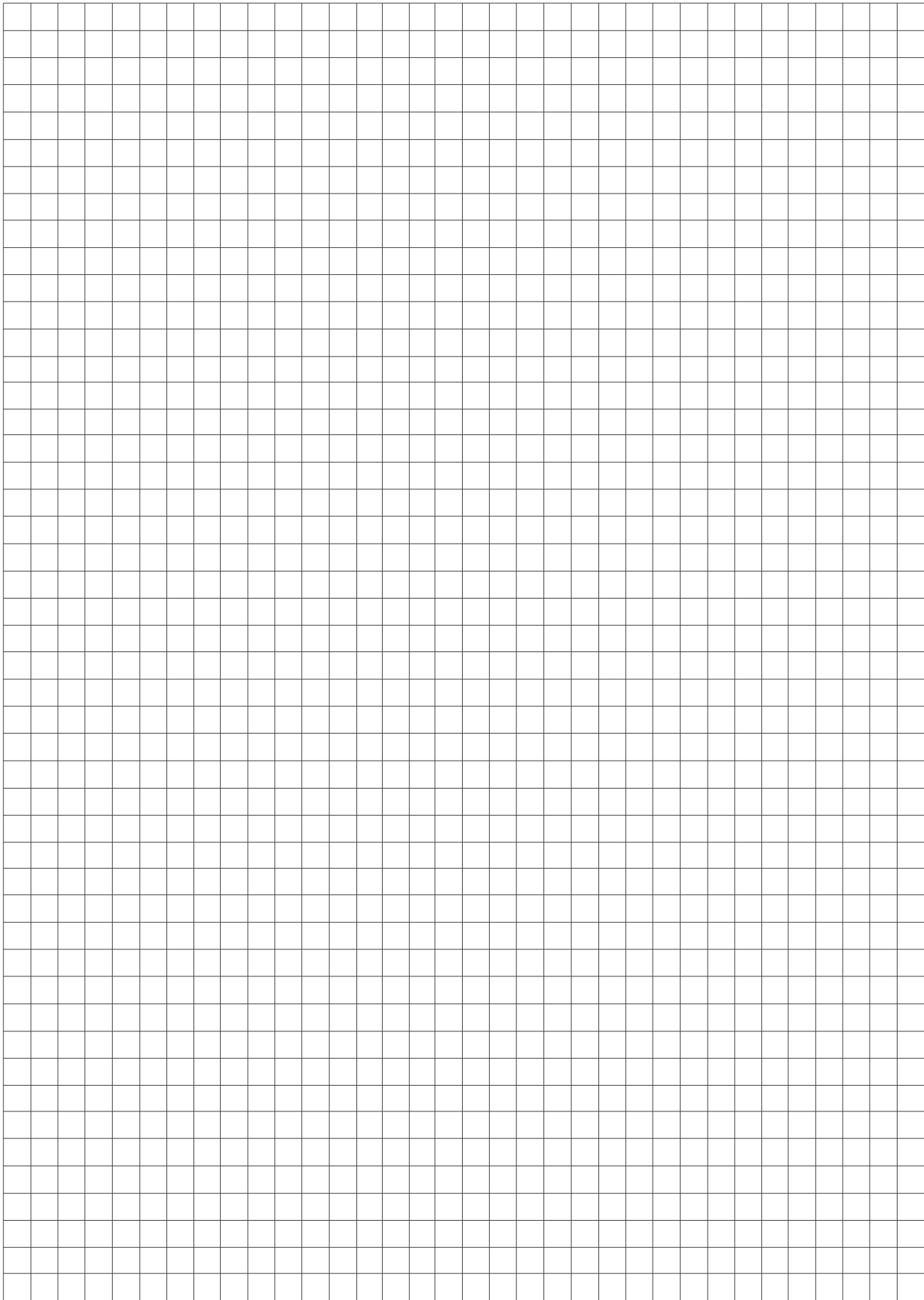












## Conditions for domestic deliveries

Deliveries above a net order value of € 900.00 within the Federal Republic of Germany (mainland) are made carriage-free. For orders of under € 900.00 we charge a pro-rata carriage fee of € 39.00. Regardless of the order value we charge a flat fee of € 4.00 per delivery for transport protection material. We also pass on the statutory motorway toll for freight vehicles of € 3.60 per pallet space.

In the case of parcel deliveries we charge € 3.90 for transport protection material and an € 8.50 flat rate fee for delivery.

In exceptional cases we will also charge, where necessary, a bulky goods surcharge for orders of over € 900.00. This will be stated in the offer.

## Delivery conditions for other European countries

Deliveries to the BeNeLux states (mainland) and Austria above a net order value of € 2,500 are made carriage-free. For orders of less than € 2,500, deliveries are sent ex works. The applicable freight costs for the delivery will be stated separately. Regardless of the order value we charge a flat fee of € 4.00 per delivery for transport protection material. We also pass on the statutory motorway toll for freight vehicles of € 3.60 per pallet space.

Deliveries to other countries are made on an ex works basis. Please ask us separately for the delivery costs.

Any deviating special agreements must be made in writing.

## Fee for returning goods to stock

In the event of returns for which we are not responsible we charge a handling fee and a fee for returning the goods to stock.

Up to a net goods value of € 300 the fee is € 30.00, and for goods values in excess of this amount the fee is 10% of the net goods value.

## General terms and conditions.

### I. Contract conclusion

1. The offer of the supplier is non-binding. Contracts and agreements are only binding once they have been confirmed in writing by the supplier.
2. The offer is subject to deviations which may reasonably be accepted by the buyer from the documentation associated with the offer, with particular reference to diagrams, drawings, weight and dimension data, provided that they are not explicitly marked as binding.
3. The supplier reserves the right of ownership and copyright of quotes, diagrams, calculations and other documents; these may not be made available to third parties without the approval of the supplier.

### II. Prices

1. The agreed prices are quoted ex works excluding packaging, freight and customs duties. The applicable statutory VAT rate in force at the time of conclusion of the contract is levied on the agreed prices.
2. Any material price or wage increases which occur prior to delivery permit the supplier to recalculate and increase the price, provided that the buyer is a company/trader. Regarding all other persons, the supplier is permitted to undertake such price recalculations and increases if the delivery is to be made more than four months after conclusion of the contract.

### III. Payment terms

1. The term of payment is 30 days after the date of invoice. If payment is made within 8 days of the invoice date a 2% discount is granted, and a 1% discount is granted for payments made within 14 days. The date of payment is deemed to be the day on which the supplier gains access to the money. A discount is not permitted if receivables from older invoices have not yet been settled.
2. The buyer is allowed to off-set claims of its own against those of the supplier only if the counter-claims of the buyer are uncontested or have been established as final and absolute in a court of law; the buyer can assert a right of retention only if it is based on claims arising from the same contract.
3. Bills of exchange are acceptable only by prior agreement. Bills of exchange and cheques are acceptable only on a cash basis. Discounts and fees are to be borne by the buyer. There is no obligation to produce and protest bills of exchange and cheques within the prescribed time.
4. In the event of a default on payment, interest of 5% above the base rate of interest or any further damage caused by the default will be charged.

### IV. Delivery time

1. The delivery period starts with the despatch of the order confirmation, although not before the buyer has provided the necessary documentation, approvals and licences and not before receipt of the agreed down payment.
2. The delivery deadline will be deemed to have been met if the delivery item has left the works or the buyer has been notified of readiness for delivery before the expiry of the deadline.
3. The delivery period will be extended accordingly as a result of industrial action, in particular strikes and lock-outs, and in the event of unforeseeable obstacles which lie beyond the control of the supplier, provided that such obstacles can demonstrably be shown to have significant influence on the location or delivery of the delivery item. This applies also if the same conditions arise with sub-contractors.
4. If the delivery is delayed at the request of the buyer, then the buyer will be invoiced for the storage costs incurred, starting 1 month after the notification of readiness for delivery; in the event of the goods being stored at the supplier's premises, a flat rate of at least 0.5% of the invoice amount per month will be charged. The compensation payment will increase or decrease correspondingly if the supplier can prove a higher level of damage or the buyer a lower level. After the setting and expiry of an appropriate deadline, however, the supplier is permitted to dispose of the delivery item in another way and to supply the buyer within a suitably extended period of grace.
5. Adherence to the delivery time is contingent on the fulfilment of the contractual obligations of the buyer.

### V. Transfer of risk and receipt of goods

1. Even if the seller uses its own means of transport, the risk is transferred at the latest upon despatch of the parts of the delivery to the buyer. On the request of the buyer the delivery will be insured at the expense of the same by the supplier against theft, breakage, damage from transport, fire and water and other insurable risks.
2. If the delivery is delayed as a result of circumstances which are the fault of the buyer, then the risk will be transferred to the buyer on the day on which the goods are ready for delivery; the supplier is, however, obliged to conclude the insurance policies required by the buyer at the request and expense of the same.
3. The delivered items are to be accepted by the buyer, even if they show minor defects, although the rights in section VII are not affected.
4. Partial deliveries are permitted.

### VI. Retention of title

1. The supplier reserves the ownership of the delivered item until such time as the buyer has paid in full all the claims arising from the business relationship, with particular reference to any current account balances.

2. If the delivered item is linked to other items, then the buyer hereby assigns its ownership or co-ownership rights to the new object to the supplier.
3. The buyer is allowed to sell the property of the supplier only in the course of normal business transactions. The buyer hereby assigns to the supplier at the point of submission of the order all claims that accrue to the former from the resale to third parties as well as any future claims. On request of the supplier, the buyer undertakes to notify the third party about the assignment of payments to the supplier.
4. The supplier is entitled to insure the delivery item at the expense of the buyer against theft, breakage, damage by fire, water and any other damage if the buyer cannot verify that it has taken out the insurance itself.
5. The buyer is not permitted to pledge or assign the delivered item as security. The buyer must notify the supplier immediately of any pledges and confiscations or disposal by other means of the delivered item by third parties.
6. If the buyer acts in a manner which violates the contract, in particular in the event of a default in payment, the supplier is permitted to take back the goods after having issued a reminder, and the buyer is obliged to surrender the goods. The assertion of the right of retention as well as the pledging of the delivery item by the Supplier are not deemed to be tantamount to a withdrawal from the contract provided that the Consumer Credit Law does not apply.

### VII. Warranty

1. The warranty rights of the buyer are contingent on its proper fulfilment of the examination and notification of defect obligations pursuant to Section 377 HGB [German Commercial Code].
2. The legal rights of recourse of the buyer against the supplier exist only to the extent that the buyer has not concluded any agreements with its customers which go beyond the statutory claims for defects.
3. If the object of the sale has a defect which has been caused by the supplier, the supplier must always be given the opportunity to render subsequent performance within a suitable deadline. The supplier is permitted at its discretion either to remedy the defect or to supply a replacement item.
4. If the subsequent performance fails, the buyer can withdraw from the contract or reduce the purchase price without prejudice to any compensation claims. Claims of the buyer on the grounds of necessary expenses associated with the subsequent performance, in particular transport, labour and material costs, are excluded if the expenditure has increased because the object of the delivery was taken retrospectively to a location other than the place of performance.

5. Claims for defects may not be asserted in the event of minor deviations from the agreed characteristics, minor impairments of usability, natural wear and tear or in the event of damage which occurs after the transfer of risk as a result of incorrect or negligent handling, excessive strain, unsuitable equipment and/or special external influences and/or which is not envisaged as a precondition by the contract.
6. In the event that operating or maintenance guidelines issued by the supplier are not observed, unauthorised changes to the products are made, parts are changed or consumables used which do not correspond to the original specifications, the liability of the supplier for material damage will cease to apply; this exclusion will not apply only if it can be demonstrated that the warranty case has not arisen as a result of one of the aforementioned grounds for exclusion.
7. The right to claim for material defects expires after 12 months, where the term begins upon the transfer of risk. The aforementioned provisions apply if Section 438, paragraph 1, point 2 (Items for construction), Section 479, paragraph 1 (Right of recourse) and Section 634a (Construction defects) do not prescribe longer deadlines.
8. Provided nothing contrary is specified below, further claims of the buyer - regardless of the legal grounds - are excluded. The supplier is therefore not liable for damage not incurred directly by the delivery item; the supplier is in particular not liable for lost profits or other financial losses on the part of the buyer.
9. The Supplier is liable pursuant to the legal provisions if it culpably violates a key contractual obligation; in this case, however, the compensation liability is limited to the foreseeable damage which would typically occur in such a case. For the rest, liability to pay compensation is excluded; in this respect the supplier is in particular not liable for damage which is not incurred directly by the object of delivery.
10. The aforementioned exclusions of liability do not apply if the cause of the damage is ascribable to wilful intent or gross negligence; furthermore, they do not apply in cases of damage to life, limb and health or in cases in which the buyer is seeking to assert a compensation claim on the basis of the acceptance of a guarantee concerning the existence of a property, unless the guarantee of quality is intended to cover only the contractual conformity of the underlying delivery but not the risk of consequential damages caused by a defect. A change to the burden of proof to the detriment of the buyer is not associated with the aforementioned provisions.

## VIII. Liability

1. Further liability for compensation in excess of that stated in point VII is excluded irrespective of the legal nature of the asserted claim, with particular regard to breaches of duty arising out of the contractual obligation and from unlawful actions.

2. The exclusion of liability in point VIII does not apply to claims according to the Product Liability Law or to cases of injury to life, limb or health.
3. If the liability of the supplier is excluded or restricted, this applies also to the personal liability of the employees, colleagues, representatives or vicarious agents of the supplier.

## XI. The supplier's right of withdrawal

1. In the event of unforeseeable events within the meaning of Section IV, the contract will be suitably adjusted to the extent that these events considerably alter the economic significance or content of the performance or the business operation of the supplier and in the event that it subsequently becomes clear that it is impossible to execute the contract.
2. If, for economic reasons, it should prove unreasonable for the supplier to accept this, the supplier is entitled to fully or partially withdraw from the contract. Such a withdrawal does not entitle the buyer to assert claims for compensation.
3. If the supplier wishes to assert this right of withdrawal, it must notify the buyer thereof as soon as it becomes aware of the implications of the events, even if an extension of the delivery period was initially agreed with the buyer.

## X. Applicable law, place of jurisdiction, partial nullity

1. For all mutual and future claims from the business relationship with companies/traders, legal corporate bodies under public law as well as special funds under public law including receivables from bills of exchange and cheques, the exclusive place of jurisdiction is the registered office of the supplier. The supplier is, however, permitted to also institute proceedings against the buyer at its place of residence.
2. Unless otherwise specified in the order confirmation, the place of performance is the registered office of the supplier.
3. The law of the Federal Republic of Germany applies to these terms and conditions and all legal relationships between the supplier and the buyer. The application of the UN Convention on Contracts for the International Sale of Goods is excluded.

## XI. Miscellaneous

1. Contradictory provisions of the buyer are invalid and are explicitly rejected.
2. The amendment or ineffectiveness of individual provisions of these General Terms and Conditions of Business and Delivery does not affect the validity of the remainder of the provisions.

